



Infotainment-Systems

TFT - Displays

Push Button

Dot-Matrix-Displays

Components

**bs** tableau



EG  
Elevators  
Escalators  
Staircases  
Handrails  
Staircases  
Handrails  
Staircases  
Handrails

EG

EG

EG

push button / components :

d12/d31

d13/d32

d25/d26

d28

d29

d33

d38

glass faceplates / sensor button

fluorescent arrows

button coding field

voice announcements

wiring CANopen

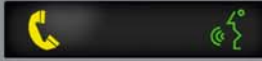
independent lift shaft copy system

dot matrix displays

push button **d12**  
**d31**



Tragfähigkeit **630** kg  
oder **8** Personen  
Baujahr : 2011 Fabr.-Nr.: 12345  
**Aufzug im Brandfall nicht benutzen**



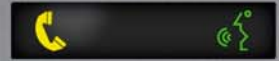
②



②



Tragfähigkeit **630** kg  
oder **8** Personen  
Baujahr : 2010 Fabr.-Nr.: 12345  
**Aufzug im Brandfall nicht benutzen**



②



②



illuminated field LF44x32WF



illuminated field LF44x32-BW/BS  
emergency piktograms



illuminated field LF44x32



key switch  
SS44x32



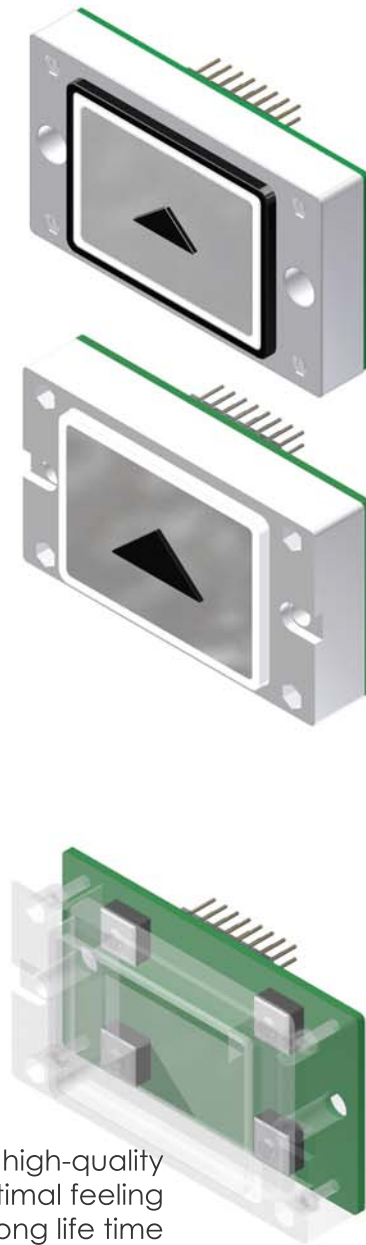
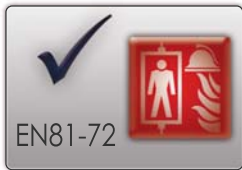
lettering space V2A area flush ( Hair joint )  
44/60/66/75/80/100/120 x 32mm  
coloredly printed



lettering space illuminated green, blue, white, yellow  
BF6032 / BF8032 ( 60x32mm / 80 x 32mm )

push button **d12**  
**d31**

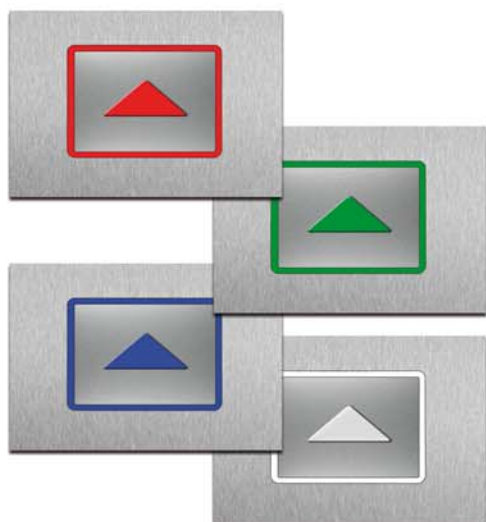
short-stroke push button 44 x 32mm  
installation area flush



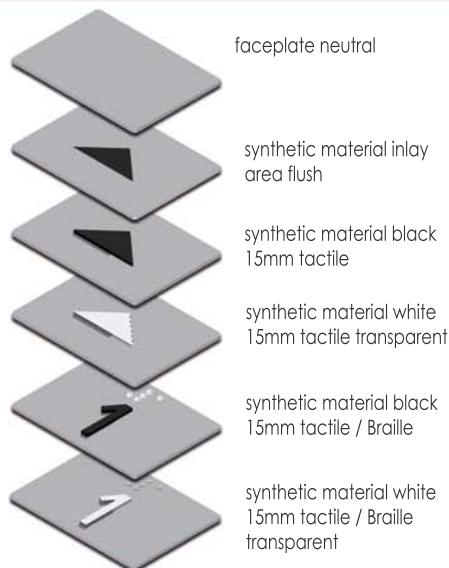
4 switching points with high-quality micro switches give an optimal feeling for the push with a long life time



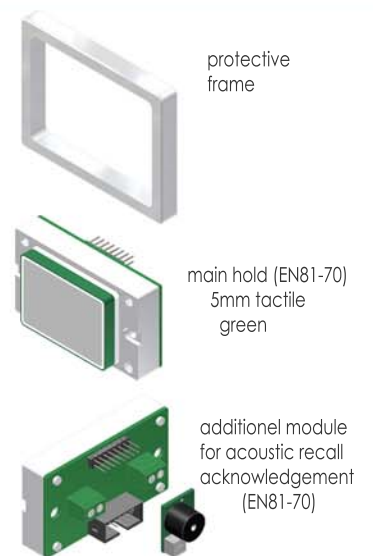
▷ fluorescent colors



▷ faceplates



▷ accessoires



push button **d13**  
**d32**



illuminated field  
LF50x50



illuminated field  
LF50x50WF



illuminated field  
LF50x50-BW/BS  
emergency piktograms



key switch  
SS50x50

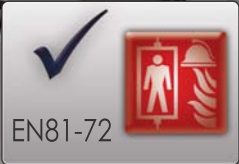


lettering space  
illuminated  
red, green, blue,  
white, yellow  
BF80x50mm



toggle switch  
NH50x50  
red / black

push button **d13**  
**d32**



big area button  
50x50mm

handicapped accessible

installation area flush

waterproof



**d13**



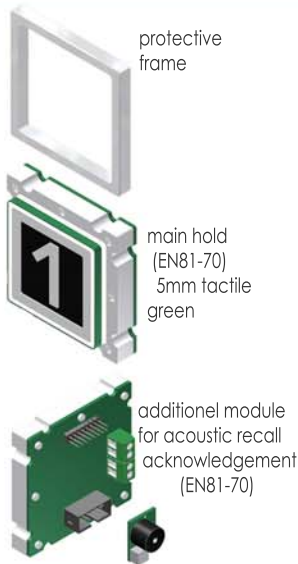
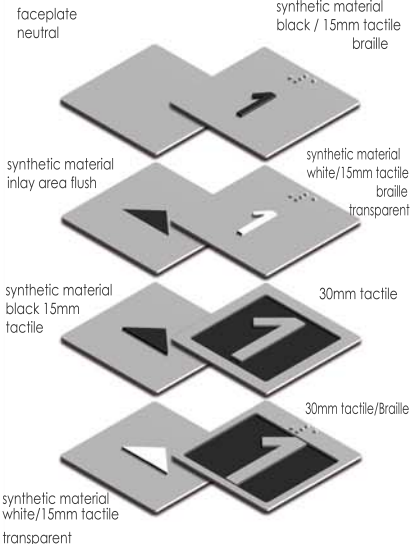
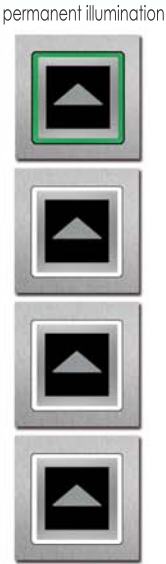
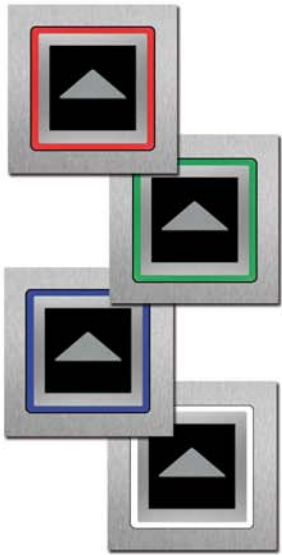
**d32**

▷ fluorescent colors

▷ fluorescent colors / Bi-Color

▷ faceplates

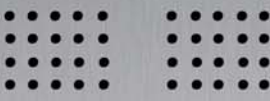
▷ accessoires



push button **d26**



car panel  
vandal proof  
EN81-71/class2



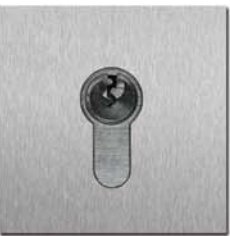
illuminated field  
PF20



illuminated field  
PF20WF



illuminated field BW/BS  
emergency piktograms



key switch  
SS1



toggle switch  
NH1  
red / black



push button **d25**  
**d26**

button round 34/25 mm  
**d26** = 34mm  
circular illuminated  
dot illuminated

**d25** = 25mm  
dot illuminated

especially vandal proof  
waterproof IP67  
EN-81-71/ class 2



**d26ri**

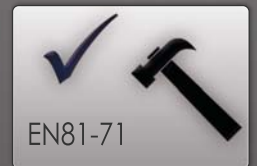


**d26p**

**d25p**



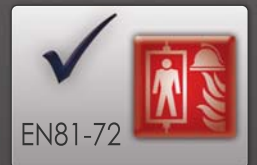
print with screw terminals  
or flatcable for pre-wiring



EN81-71

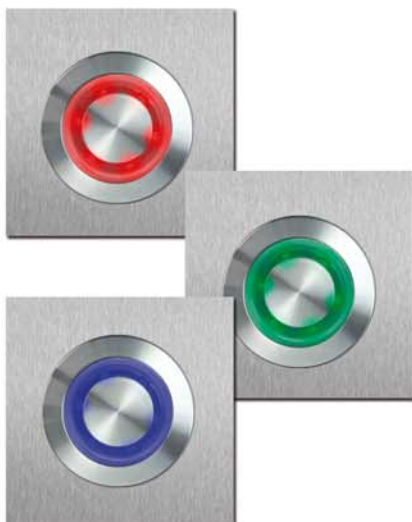


waterproof



EN81-72

▷ fluorescent colors



▷ lettering



engraving / faceplate



lettering plate  
tactile / Braille



digital-print / faceplate

▷ accessoires



protective  
frame



main hold (EN81-70)  
5mm tactile  
green



additional module  
for acoustic recall  
acknowledgement  
(EN81-70)

push button **d28**



illuminated field LF32x32



illuminated field LF32x32-BW/BS  
emergency piktograms



illuminated field LF32x32WF  
Up/Down



toggle switch NH32x32  
red / black



key switch  
SS32x44



lettering space V2A area flush ( Hair joint )  
44/60/66/75/80/100/120x32mm  
coloredly printed

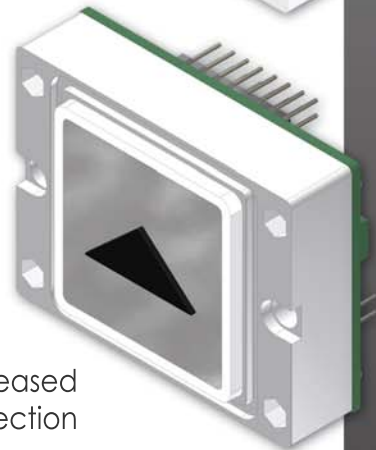
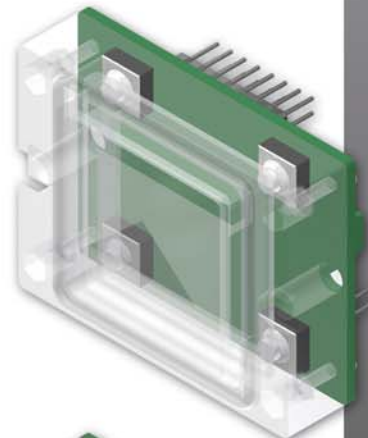
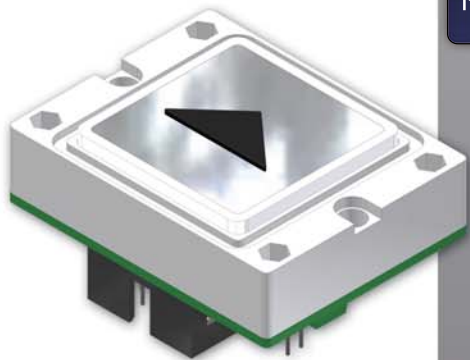


lettering space illuminated red, green, blue, white, yellow  
BF6032 / BF8032 ( 60x32mm / 80 x 32mm )

# push button d28

short-stroke push button ( 32x32mm )  
 installation area flush  
 compact measurements ( 50x39mm )

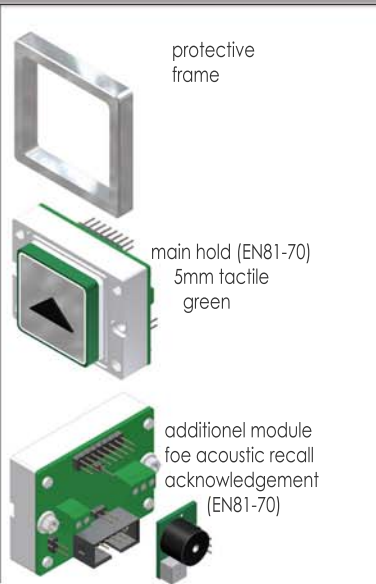
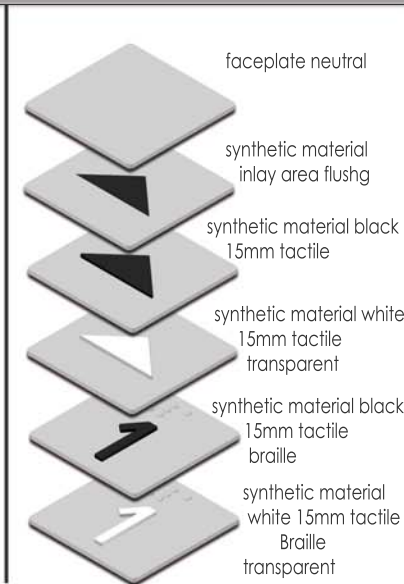
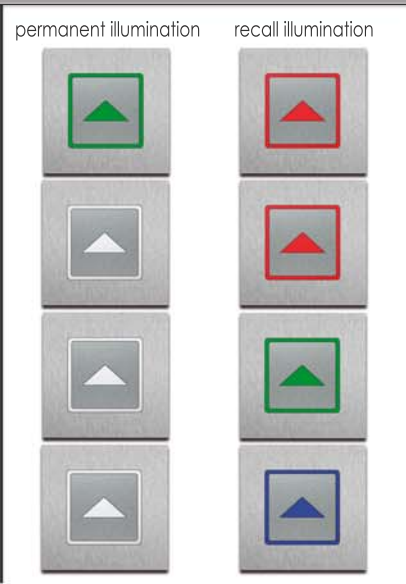
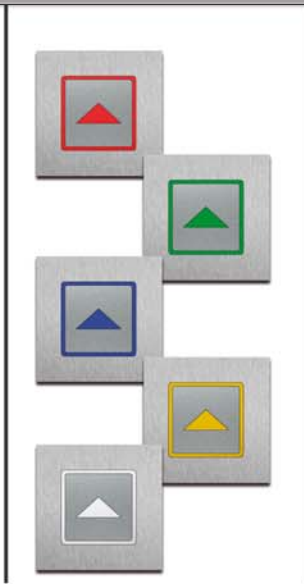
4 switching points with high-quality  
 micro switches give an optimal feeling  
 for the push with a long life time



- waterproof
- EN81-70
- EN81-72

seal in the case increased  
 humidity protection

▷ fluorescent colors    ▷ fluorescent colors Bi-Color    ▷ faceplates    ▷ accessoires



push button **d29**



illuminated field LF32R



illuminated field LF32R-BW/BS  
emergency pictograms



illuminated field LF32RWF



lettering space V2A area flush ( hair joint )  
44/60/66/75/80/100/120x32Rmm  
coloredly printed

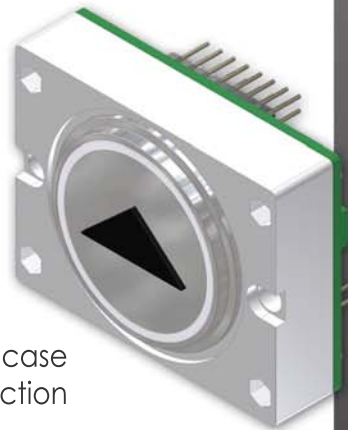
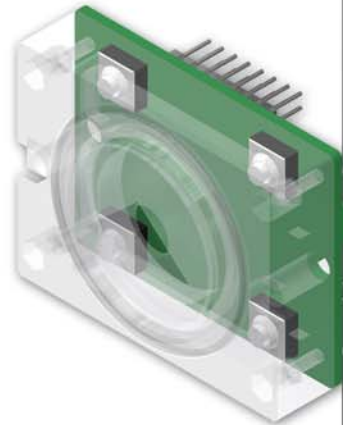
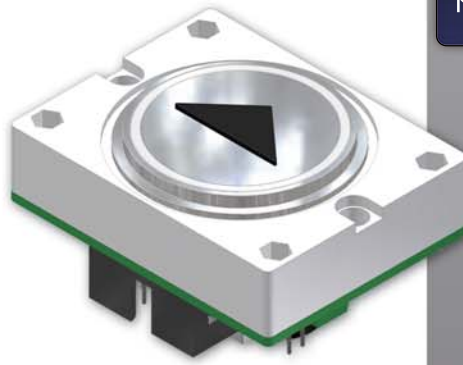


lettering space illuminated red, green, blue, white, yellow  
BF6032R / BF8032R ( 60x32mm / 80 x 32mm )

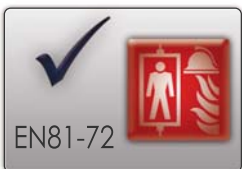
push button **d29**

short-stroke push button ( 32mm )  
 installation area flush  
 compact measurements ( 50x39mm )

4 switching points with high-quality  
 micro switches give an optimal feeling  
 for the push with a long life time



seal in the case  
 increased humidity protection

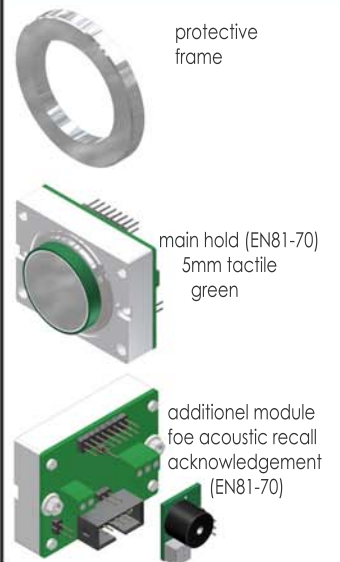
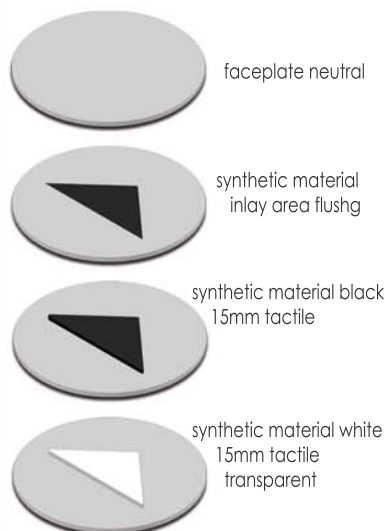
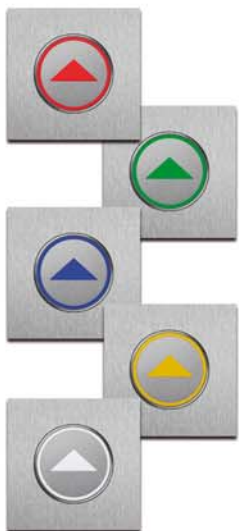


▷ fluorescent colors

▷ fluorescent colors Bi-Color

▷ faceplates

▷ accessoires



push button **d33**



illuminated field LF32R



illuminated field LF32R-BW/BS  
emergency piktograms



illuminated field LF32RWF



lettering space V2A area-flush ( hair joint )  
BF44/60/66/75/80/100/120x32R  
coloredly printed



lettering space illuminated red, green, blue, white, yellow  
BF6032R / BF8032R ( 60x32mm / 80 x 32mm )

# push button d33

short-stroke push button

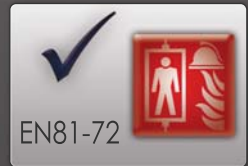
32mm

installation area flush

waterproof

compact measurements

50 x 38mm

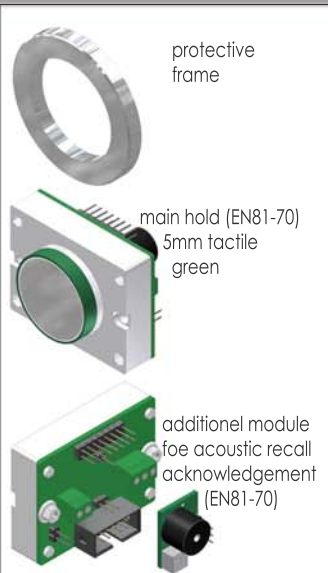
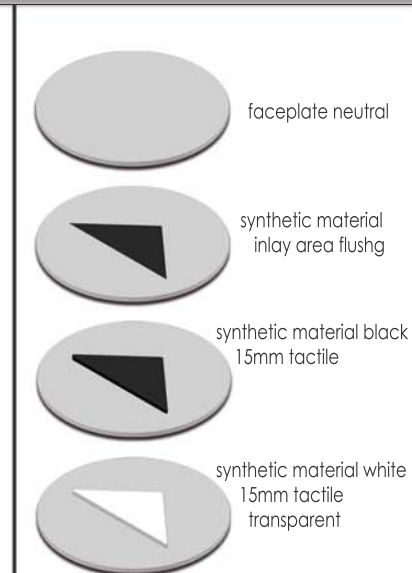
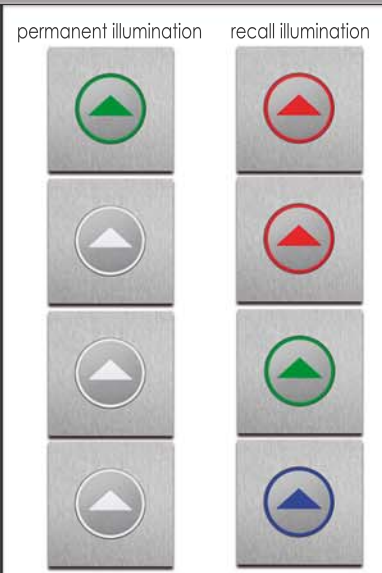
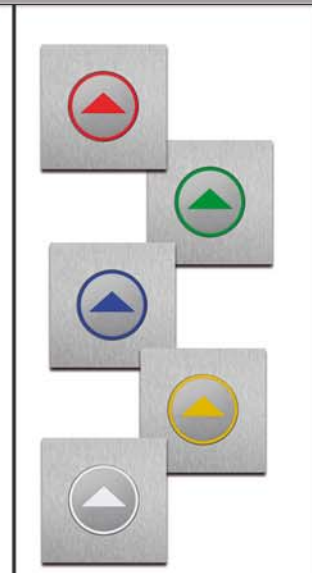


▷ fluorescent colors

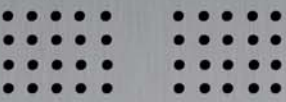
▷ fluorescent colors Bi-Color

▷ faceplates

▷ accessoires



push button **d38**



illuminated field LF50R



illuminated field LF50RWF



illuminated field LF50R-BW/BS emergency piktograms



key switch SS50x50

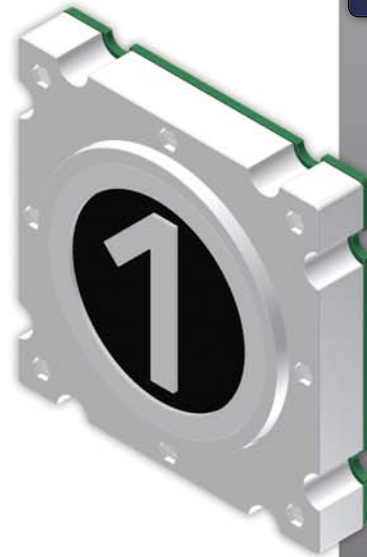


toggle switch NH50x50R - red/black



# push button d38

compact measurements

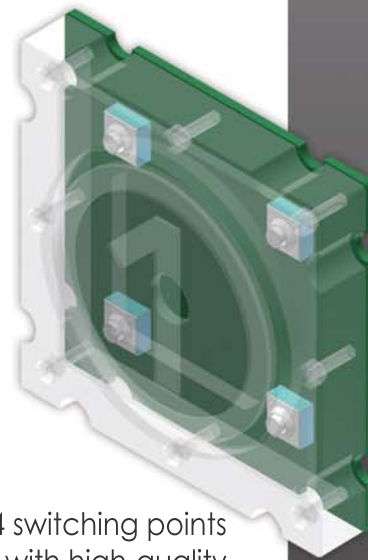


big area button  
50mm

handicapped accessible

installation area flush

waterproof



4 switching points  
with high-quality

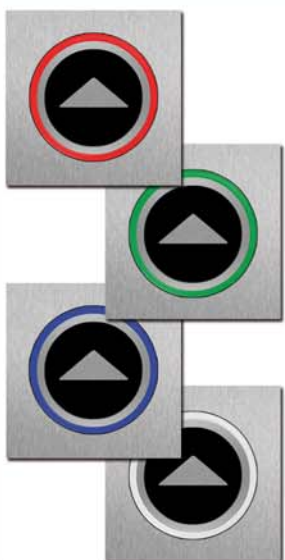


## ▷ fluorescent colors

## ▷ fluorescent colors / Bi-Color

## ▷ faceplates

## ▷ accessoires



permanent illumination



recall illumination



faceplate  
neutral



synthetic material  
inlay area flush



synthetic material  
black/15mm  
tactile



synthetic material  
white/15mm tactile  
transparent



synthetic material  
black / 15mm tactile  
braille

synthetic material  
white/15mm tactile  
braille  
transparent

30mm tactile



protective  
frame



main hold  
(EN81-70)  
5mm tactile  
green



additional module  
for acoustic recall  
acknowledgement  
(EN81-70)

## Glass faceplates

Glass faceplates  
manufactured individually

Available back-side painted  
or printed by  
digital printing system  
with individual patterns,  
text or logos

Available as sensor button  
behind glass or  
as short stroke push button  
area flush in a glass cutout



push button  
**d33** with  
extension  
for 6mm glass



key  
**ssd38** with  
extension  
for 6mm  
glass



large area push button  
**d38** with extension  
for 6mm glass

**Aufzug im Brandfall  
nicht benutzen**

# Sensor Button

Sensor button for glass thickness up to 18 mm

Sensitivity of the sensor is adjustable in 3 steps by using a jumper

Acknowledgement by LED colors red, green, blue, white

also available in bi-colors red-green/white-blue white-green/white-red

Operating voltage for sensor 24V/DC

mounting behind glass on a carrier plate

2 potential free alternating contacts

connection by terminal-strip or 10pin flat cable



5.0G  
4.0G  
3.0G  
2.0G  
1.0G  
EG  
UG



3  
2  
1  
EG  
UG



Push button types :  
d12/d31/d28/d29/d33  
d13/d32/d38



push button **d29**  
installation with a carrier plate  
behind glass



hall faceplate colour printed  
sensor button **d28**  
symbol translucent

Fluorescent arrows



# Fluorescent arrows

Fluorescent arrows as direction indication or travel indication

Homogenous illumination with power saving and long-lasting LED-technology

Fluorescent colors red, green, blue, white

compact sizes

Arrow sizes 30 up to 80mm

Rear side mounting with welded studs

Connection by terminal-strip or 10pin flatcable



embossed  
12mm

surface plates  
area flush

prismform

## Details

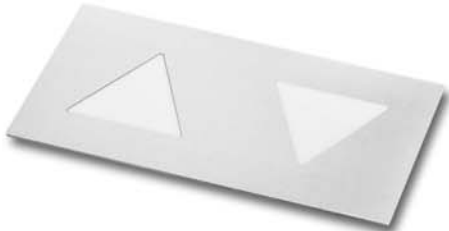
**PF30** - arrow height 30 mm



**PF45** - arrow height 45 mm



**PF60/PF80** - arrow height 60/80 mm



**PFPR45** - arrow height 45 mm / prismform



**PFH45** - arrow height 45 mm / 12mm embossed



**PFH80** - arrow height / 12mm embossed



Button coding field **TCBS2**

Vandal button safe coding field

Metal plate

IP 67

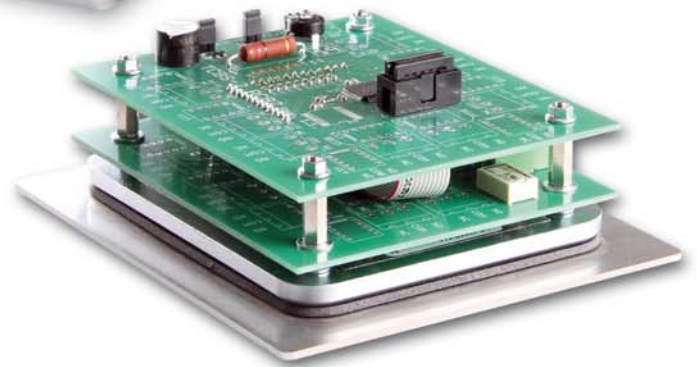
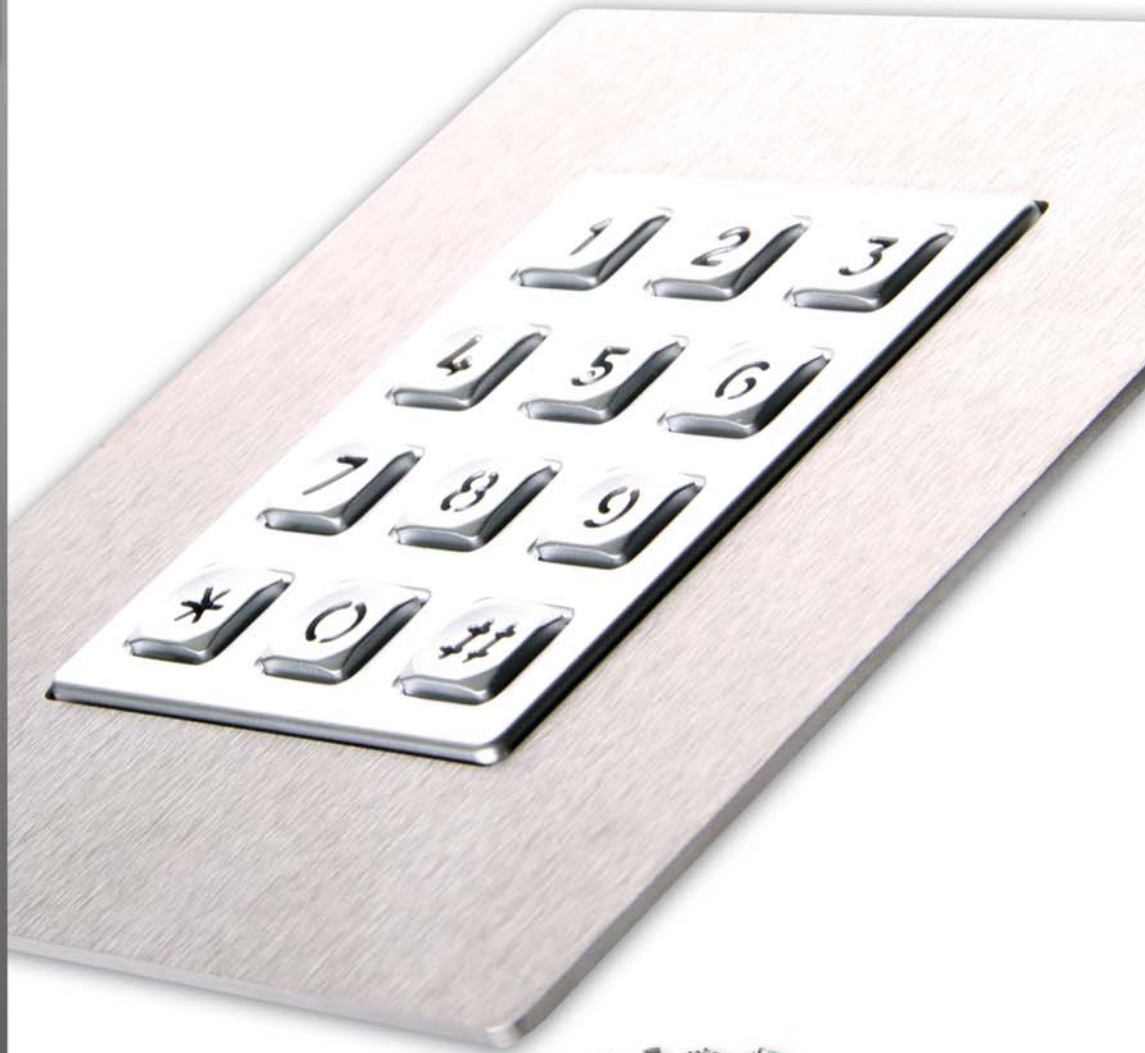
16 independent channels  
(potential-free exits,  
close CN / open CO,  
30V/AC/DC 1A)

Coding field colored yellow  
with acoustic acknowledgement

Operating voltage  
12 - 24V/DC

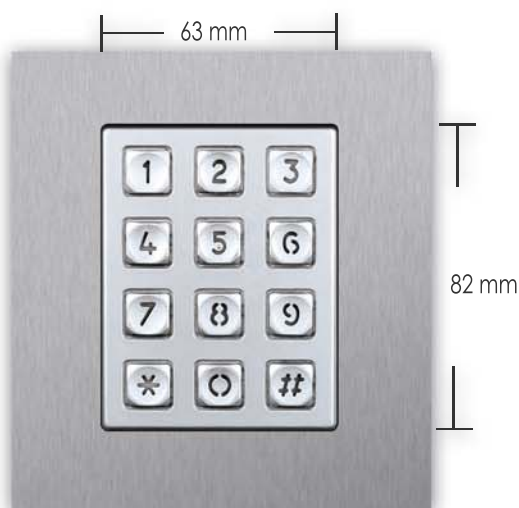
Switching time for all relays  
simultaneous from  
0.5 to 10 seconds adjustable with  
potentiometer

Signalling transmitter  
disconnectable

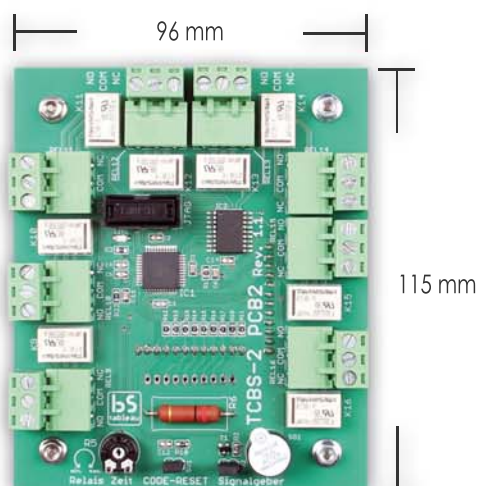


▷ Details

Measures coding field



Measures rear



# Voice announcements SP101 / SP3.5

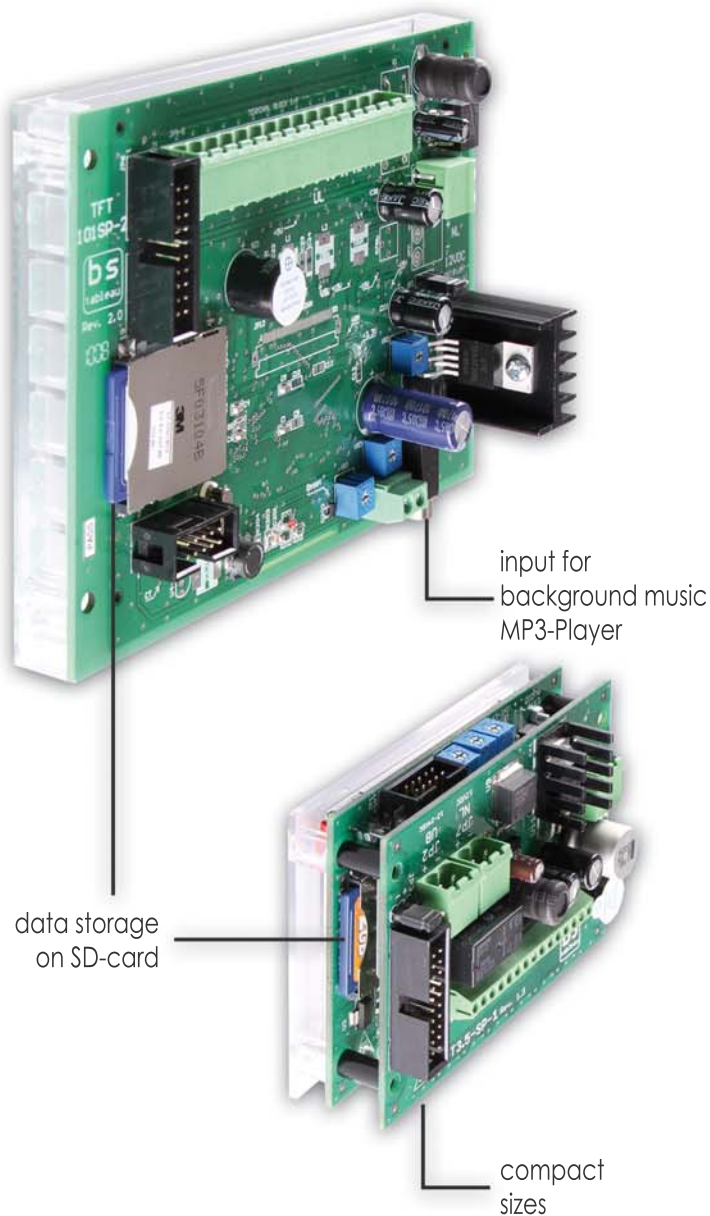
Easily programmable  
voice announcements  
SP101 / SP3.5

Announcements of :  
floor stands (max. 49)  
6 special announcements  
2 emergency notes  
for example :  
pleas wait/please speak  
direction of travel / gong  
background music

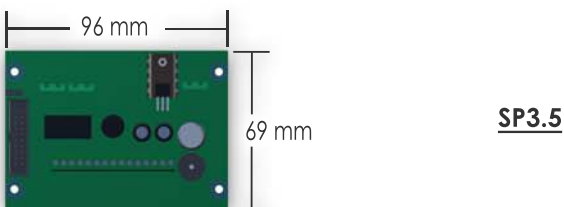
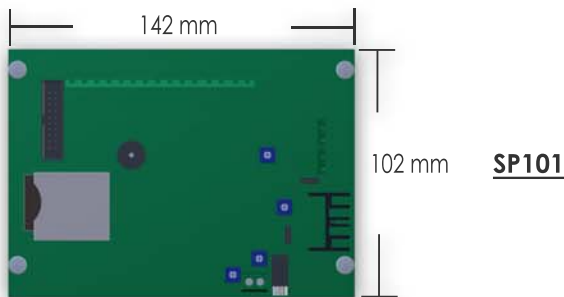
display of background music  
optional intern (SD-Karte)  
or extern for example MP3-Player

control drive system  
1 from n, gray/binary code  
or control independent  
by digital lift shaft copy system

separate emergency light input  
12-24V to supply the emergency  
voice announcement



## Details



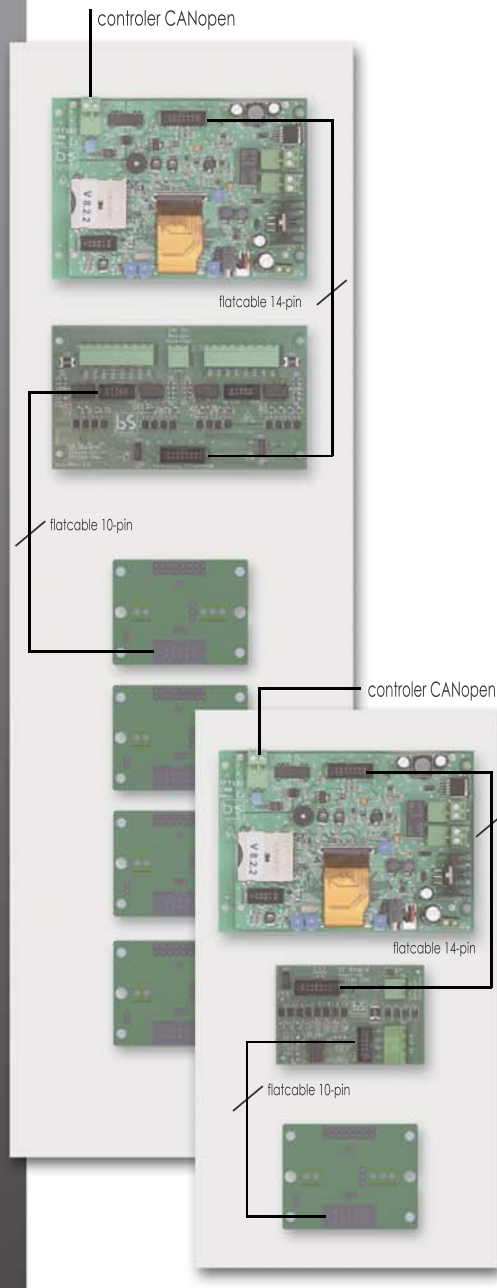
windows-Software for programming



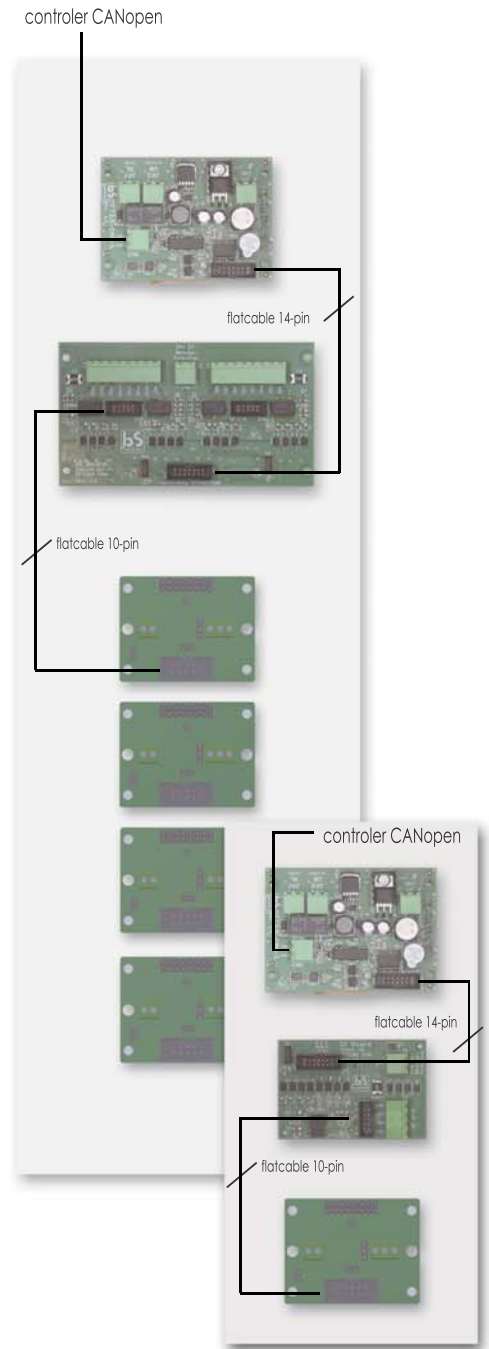
wiring for fixtures on CANopen  
compatible controller  
connection over  
TFT102-CAN/TFT3.5-CAN

connection by terminal-strip  
or 10pin flatcable

**car or landing fixture  
with TFT 102-CAN/TFT102-SP-CAN**



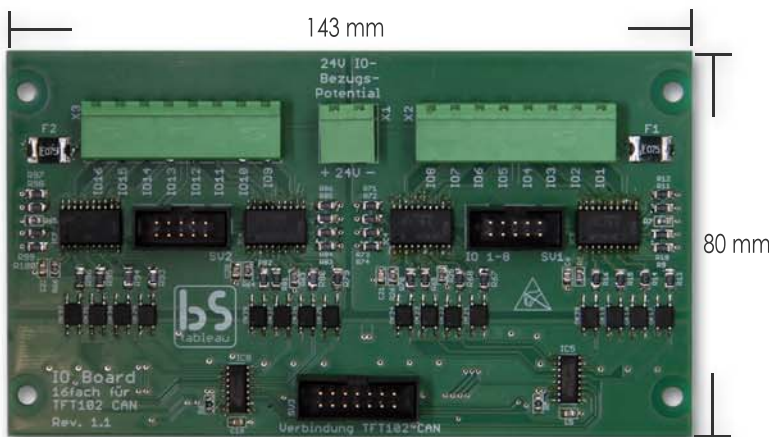
**car or landing fixture  
with TFT 3.5-CAN/TFT3.5-SP-CAN**



▷ Details

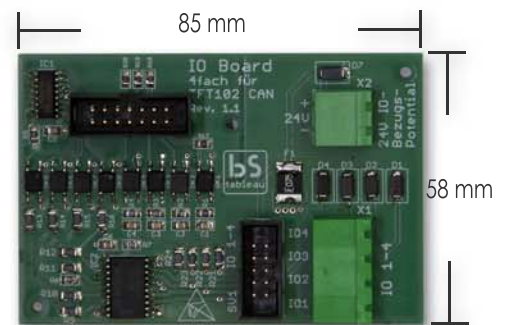
connection board car fixture

- 16-pin IO-board / 16 channels / 24V +
- connection by terminal-strip or flatcable (8 functions)



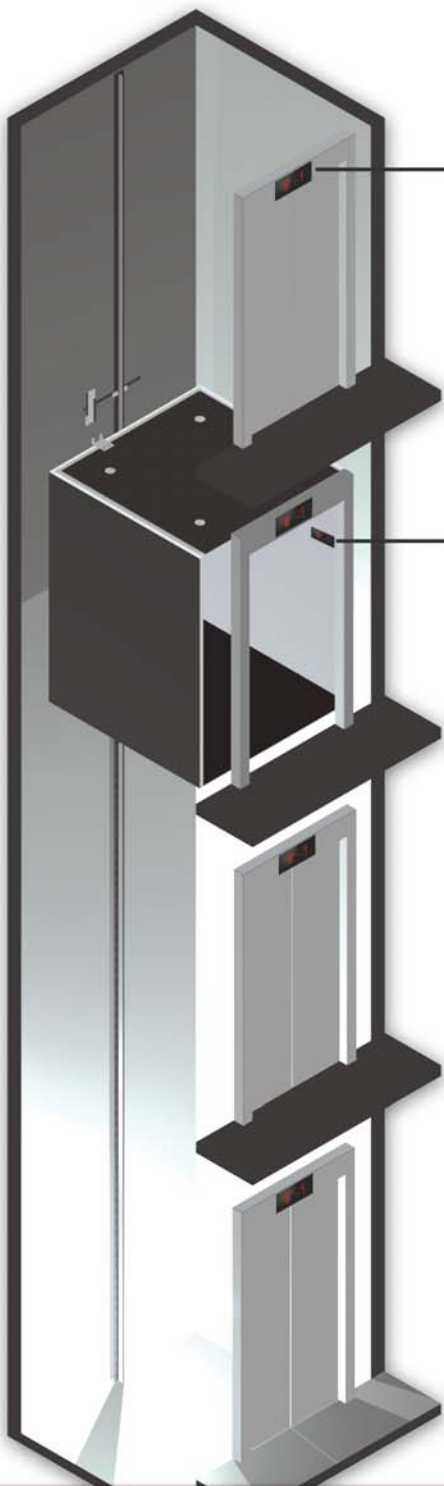
connection board landing fixture

- 4-pin IO-board
- 4 channels / 24V +





# Independent lift shaft copy system



hall indication/gong

cabin indication



easily installation  
2 magnets per stop

Control independent drive system for matrix-displays, voice announcements, TFT-displays, Infotainment systems

Signalisation station of : floor stand direction of travel up/down/stop, gong

1 sound - going up  
1 sound - going down  
as many as possible are connectable (parallel)  
indication by 3 wires of the lift shaft cable (24V)  
compatible to all bstableau matrix indications, TFT-displays 3.5 inch to 21.5 inch  
voive announcements  
SP3.5/SP101

## Details



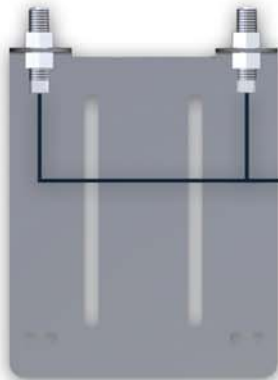
mount with 2 magnet switches



special mount with 2 magnets



indication/TFT-display  
voice announcement



power supply 24V

# Dot-Matrix Displays



## MA45x21

Text size include additional information as current or 50mm floor information over the complete display height



all indication extremely compact and space-saving

MA10x7-50-2



MA10x7-30-2



MA5/10x7-50



MA15x7-50-2



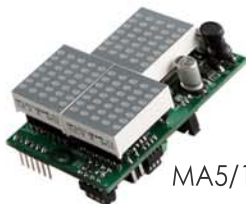
MA15x7-30-2



MA 5x7-50-2



MA5x7-30-2



MA5/10x7-30



MA15x7-30W-2



MA45x21-2

# Dot-Matrix Displays

Text height 30 / 50 mm  
until 49 floors  
8 current texts

floor position with scrolling effect

arrow with scrolling effect  
or static

12-24V/DC

low current consumption  
for example MA15x7-30 max. 50mA

drive  
1 from N  
Gray code, Binary Code or  
independent lift shaft  
copy-system

standardized connecting  
plug 20-pin for all  
indications

additional board for  
solderless lug connection  
available

For using this display  
on the corridor it is possible  
to assign for each indication  
to each floor.  
The direction indication  
will be show and an arrival  
gong sounds.  
Control signals for each floor  
are not necessary.

Fluorescent colors red, green, blue,  
white, yellow, orange

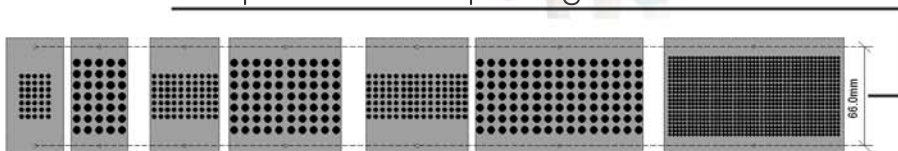
2-sound arrival gong integrates



MA15x7-30W-2....particularly low  
tolerances for the installation  
over the door



all indications with identical feed hole pitch -  
no problems for replacing under each other



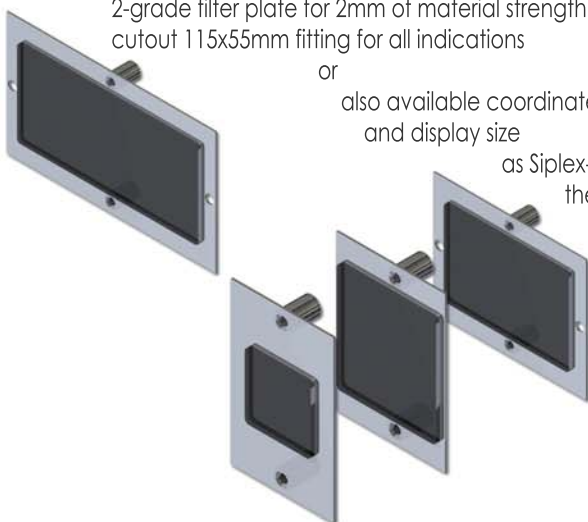
## Details / accessoires

2-grade filter plate for 2mm of material strength  
cutout 115x55mm fitting for all indications

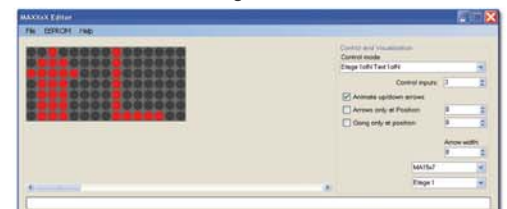
or

also available coordinated on installation solution  
and display size

as Sipler-VSG-2-grade deflection and  
thermally hardened as  
vandal sure  
execution



## PC-Configuration Software



Equipment to burn an EE-Prom  
and a PC-Connecting cable





TFT - displays :

TFT 3.5

TFT 101

TFT 7,0-21 inch

touch-TFT-systems

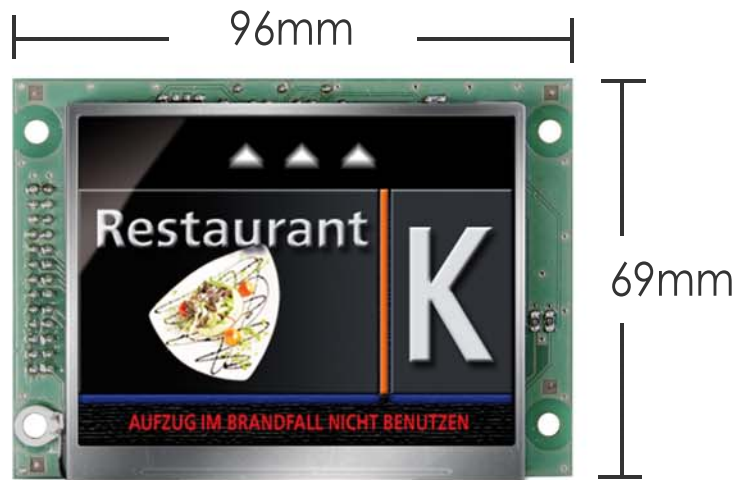
TFT-stretch-display

bildung-infotainment-system

**TFT**  
Display

TFT-3.5  
TFT-3.5-SP  
TFT-3.5-CAN  
TFT-3.5-SP-CAN

compact measurements



free graphic design  
no grid / no layout presentation



**TFT**  
Display

**TFT-3.5**  
**TFT-3.5-SP**  
**TFT-3.5-CAN**  
**TFT-3.5-SP-CAN**

5 creation areas are base on your liberal decision  
 floor position,  
 up-down direction,  
 special texts,  
 emergency pictograms,  
 background picture  
 up-down directions  
 arrows rolling  
 separate input for  
 emergency light ( 12-24V )  
 programming inputs  
 1 from N, Gray or Binarycode  
 set a jumper for control  
 system works ( + or - )  
 compact installation  
 measures  
 143 x 102 x 40mm

**TFT3.5-SP**

speech unit integrated  
 announcements of :  
 floor stand,  
 special text,  
 direction of travel (Gong),  
 background music  
 optional intern  
 (SD-card)  
 or extern  
 ( MP3-Player)



**TFT3.5-CAN**

control drive CAN-OPEN  
**TFT3.5-SP-CAN**

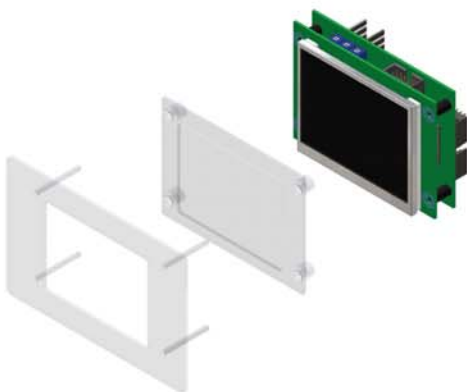
speech unit integrated  
 control drive CAN-OPEN



TFT display  
 320 x 240 Pixel  
 3,5 " / 70 x 52 mm  
 speech unit integrated ( TFT3.5-SP)



Details



installation surface area flush behind  
 a sheet glass



windows - software for programming

data storage SD-card





floor information as background picture  
for the elevator user



indication of all elevator data,  
manufacturer logo, special texts,  
emergency pictograms, floor information,  
direction indicator UP-DOWN



programming vertical in the  
hotel specific design

▷ examples





# TFT Display

TFT-101  
TFT-101-SP  
TFT-102-CAN  
TFT-102-SP-CAN

TFT LCD color-display  
320 x 240 Pixel  
5,7 " / 115 x 86 mm  
Speech unit integrated (TFT101-SP)



5 creation areas are base on your liberal decision floor position, up-down direction, special texts, emergency pictograms, background picture up-down directions arrows rolling separate input for emergency light ( 12-24V ) programming inputs 1fromN, Gray or Binarycode independent lift chaff copy system set a jumper for control system works (+ or - ) compact installation measures 143 x 102 x 40mm

## TFT101-SP

Speech unit integrated announcement from : floor position, special announcement, gong signal, background-music account from background-music intern (SD-card) or extern (such as MP3-Player)

## TFT102-CAN

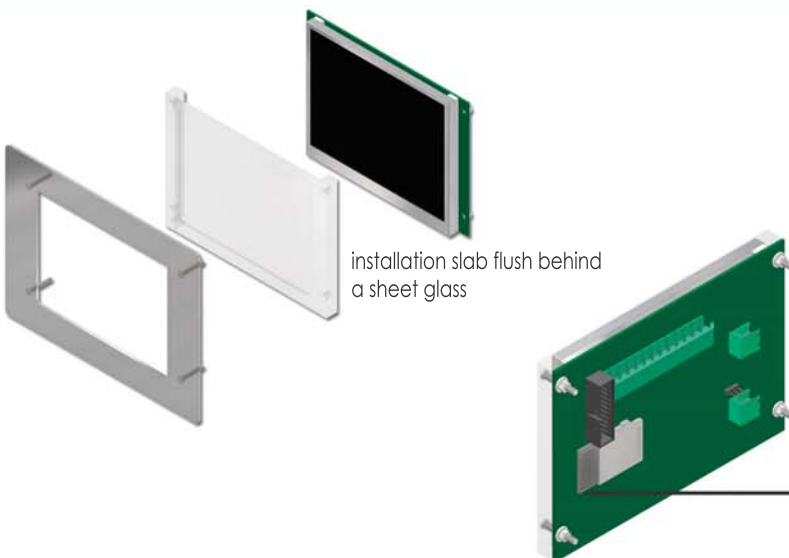
programming inputs CANopen

## TFT102-SP-CAN

speech unit integrated programming inputs CANopen



## ▷ Details / accessoires



installation slab flush behind a sheet glass



Windows - configuration software for picture import, announcement texts, fixing position and programming inputs

data storage of pictures (TFT101)  
announcement texts / background-music (TFT101-SP)  
and configuration on SD-Card

# TFT Display

7.0 - 21.5 inch

high resolution TFT-displays  
sizes 7.0 to 21.5 inch

- Format 16:9 or 4:3 / from 17,3 Zoll Full HD
- Safe operating system
- control drive mode 1ausn, gray, binarycode or controler independent
- integrated voice announcement, audio play off
- Bei Einsatz in den Etagen mehrere Monitore kaskadierbar



## Programming

- background pictures
- arrows
- floor stands
- destination floors
- special text, symbols, piktogramms
- analog clocks
- digital voice announcements in different languages
- gongs

## Alternative programming

- individual layouts, pictures desired by customer or
- or
- customisation of provided suggestions pictures in all usable formats

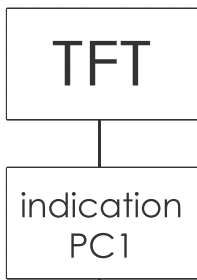
Programmig saved on an interchangeable SD card

data sticks can be created as many as possible



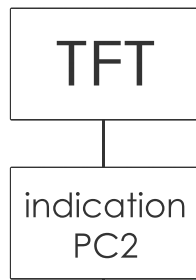
## control drive

### Indication PC1 - single version



control drive system (setting a jumper)  
- 1 by 1  
- gray or binarycode  
- separated lift shaft copy system  
(control independent)

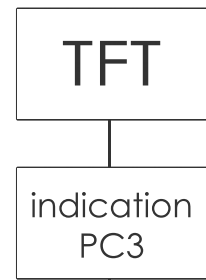
### Indication PC2 - single version



control drive  
CANopen



### Indication PC3 - single version



infosystem for  
advertising,  
videos, fotoshows,  
note texts and more  
independent from the control system



free graphic design  
( no grids / no layout presentation )



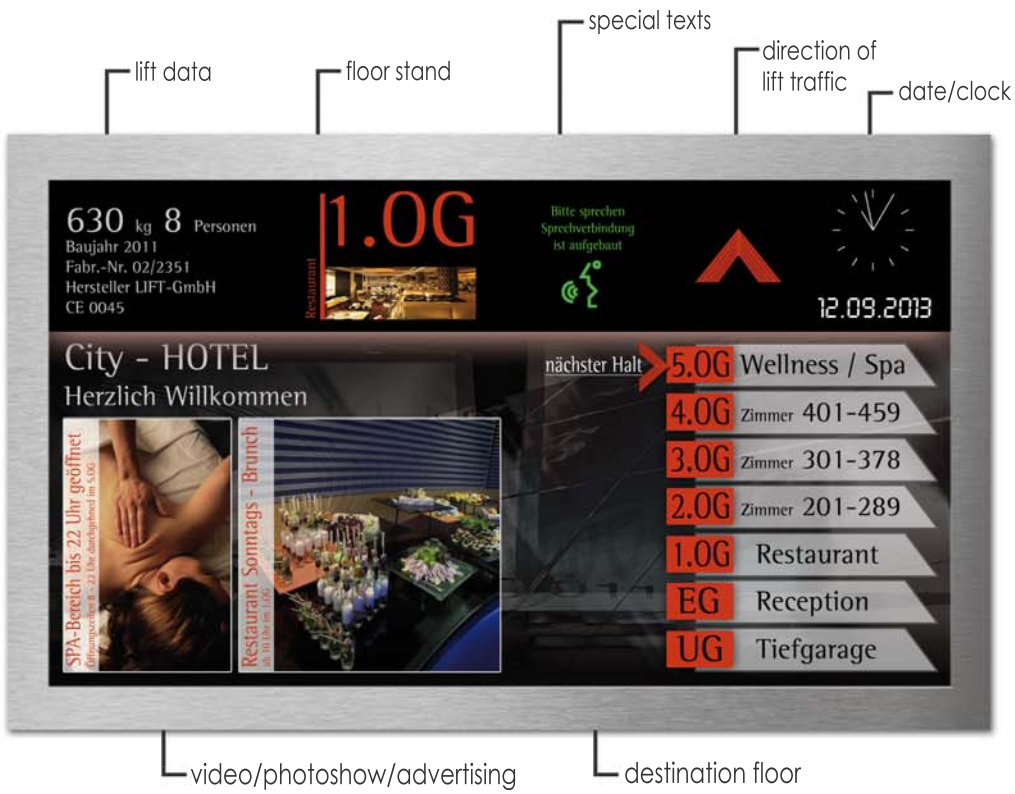
intallation/programming  
horizontal or vertical

**TFT** 7.0 - 21.5  
Display inch

- Standard Elements :**
- background screen in resolution to the monitor
  - direction of indication UP/DN/STOP include announcement
  - arrival gong 1-2 sound UP-DN - 64 floor stops include announcement
  - 64 floor stops for destination floors include announcement
  - 10 reference display/pictures for example fire man's work, out of order include announcement
  - 2 Info-texts/pictures for example lift data, specials, menu
    - analog clock any sizes and colors available
    - monitor shut down timer in minutes adjustable

**Multimedia - Contents :**

- graphic : picture file
- audio graphic : picture file + folder with audio data files
- slide show : several picture files with the same file size
- audio slide show : several picture files with the same file size + folder with audio files
- video : a video file
- simultaneous indication of : video + slide show or video + graphic



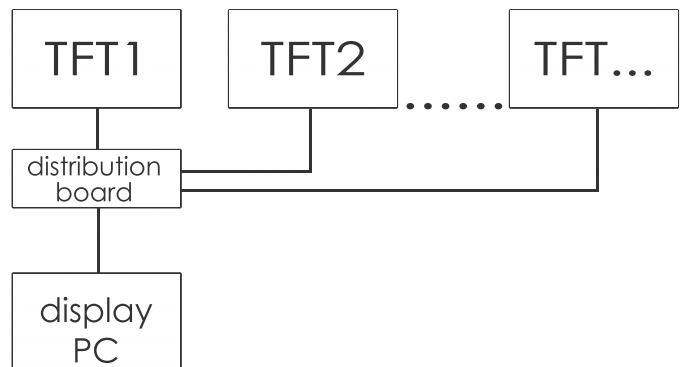
▷ Details

**Option :**

lockable box with switch and USB-Port to change the data-stick



connection several monitors over distribution board

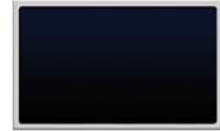


# TFT

## Standard-Monitors

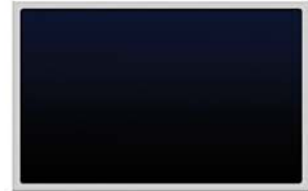
### TFT - 7,0-inch 16:9 - 1

resolution :	800 x 480 pixel
active area :	151 x 90 mm
outer dimension :	197 x 115 x 44 mm
connection :	DVI,VGA, voltage 12V/DC/0.3A
contrast :	800 : 1
brightness :	450 cd/m <sup>2</sup>
view angle (r/l/a/d) :	89/89/89/89



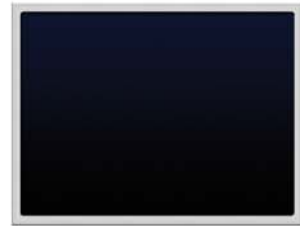
### TFT - 10,1-inch 16:9 - 1

resolution :	1280 x 800 pixel
active area :	215 x 134 mm
outer dimension :	232 x 175 x 37 mm
connection :	DVI,VGA, voltage 12V/DC/0.3A
contrast :	700 : 1
brightness :	400 cd/m <sup>2</sup>
view angle (r/l/a/d) :	85/85/85/85



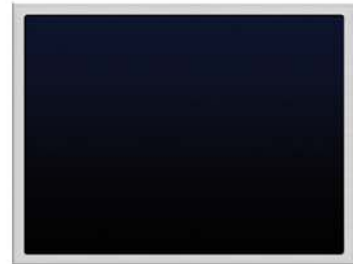
### TFT - 10,4-inch 4:3 - 1

resolution :	1024 x 768 pixel
active area :	209 x 156 mm
outer dimension :	242 x 219 x 40 mm
connection :	DVI,VGA, voltage 12V/DC/0.7A
contrast :	1000 : 1
brightness :	350 cd/m <sup>2</sup>
view angle (r/l/a/d) :	88/88/88/88



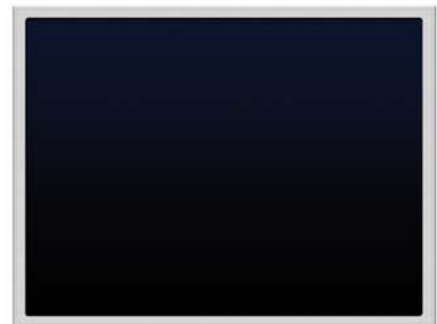
### TFT - 12,1-inch 4:3 - 1

resolution :	1024 x 768 pixel
active area :	244 x 183 mm
outer dimension :	263 x 229 x 35 mm
connection :	DVI,VGA, voltage 12V/DC/1.3A
contrast :	700 : 1
brightness :	600 cd/m <sup>2</sup>
view angle (r/l/a/d) :	80/80/70/70



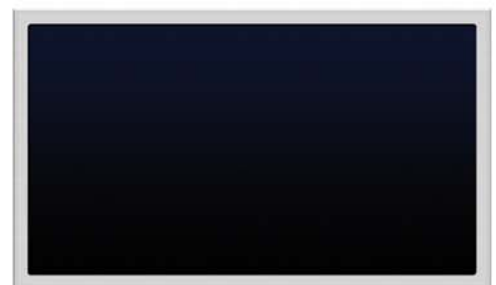
### TFT - 15,0-inch 4:3 - 1

resolution :	1024 x 768 pixel
active area :	303 x 228 mm
outer dimension :	362 x 290 x 45 mm
connection :	DVI,VGA, voltage 12V/DC/1.3A
contrast :	600 : 1
brightness :	400 cd/m <sup>2</sup>
view angle (r/l/a/d) :	70/70/55/65



### TFT - 15,6-inch 16:9 - 1

resolution :	1366 x 768 pixel
active area :	342 x 192 mm
outer dimension :	384 x 237 x 48 mm
connection :	DVI,VGA, voltage 12V/DC/1.3A
contrast :	500 : 1
brightness :	300 cd/m <sup>2</sup>
view angle (r/l/a/d) :	85/85/85/85



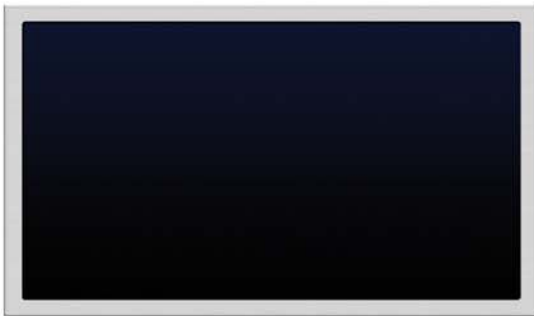
**TFT**

Standard-Monitors



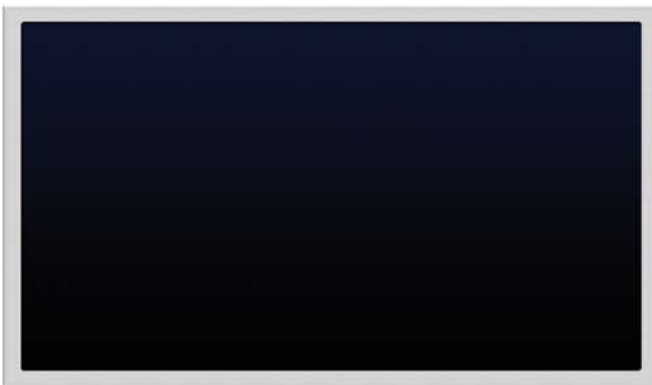
resolution :	1280 x 1024 pixel
active area :	337 x 269 mm
outer dimension :	395 x 332 x 48 mm
connection :	DVI,VGA, voltage 12V/DC/1.4A
contrast :	800 : 1
brightness :	350 cd/m <sup>2</sup>
view angle (r/l/a/d) :	80/80/60/80

**TFT - 17,0-inch**  
**4:3 - 1**



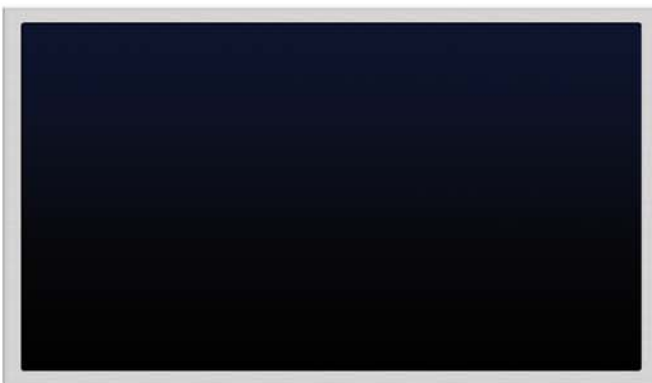
resolution :	1920 x 1080 pixel
active area :	380 x 213 mm
outer dimension :	425 x 269 x 44 mm
connection :	DVI,VGA, voltage 12V/DC/1.5A
contrast :	600 : 1
brightness :	400 cd/m <sup>2</sup>
view angle (r/l/a/d) :	80/80/60/80

**TFT - 17,3-inch**  
**16:9 - 1**



resolution :	1920 x 1080 pixel
active area :	473 x 266 mm
outer dimension :	534 x 330 x 48 mm
connection :	DVI,VGA, voltage 12V/DC/2.4A
contrast :	1000 : 1
brightness :	250 cd/m <sup>2</sup>
view angle (r/l/a/d) :	89/89/89/89

**TFT - 21,5-inch**  
**16:9 - 1 / 12V/DC**



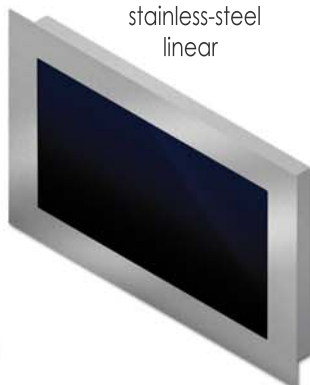
resolution :	1920 x 1080 pixel
active area :	473 x 266 mm
outer dimension :	534 x 330 x 50 mm
connection :	DVI,VGA, voltage 230V/AC/30W
contrast :	1000 : 1
brightness :	250 cd/m <sup>2</sup>
view angle (r/l/a/d) :	89/89/89/89

**TFT - 21,5-inch**  
**16:9 - 2**  
**100-230V/AC**

fixture with screw or  
stud welding  
fixation



on wall case  
stainless-steel  
linear



on wall case  
stainless-steel  
angled



fixtures

# TFT Touch Displays

- Touch-Displays as fixture up to 64 stop`s
- display area from 7,0 to 21,5 inch
- programming as switching or push button
- in/outputs available 24V + switched
- in/outputs programming as illuminated fieldn
- in/outputs galvanic separate
- graphic button code-field
- connected from second monitor possible  
 Monitor 1 : Push-Button  
 Monitor 2 : Floor-stand, direction of drive  
 texte note
- control drive :
  - Client Touch PC 1 (16 button/IO`s)
  - Client Touch PC 2 (32 button/IO`s)
  - Client Touch PC 3 (48 button/IO`s)
  - Client Touch PC 4 (64 button/IO`s)
  - Client Touch PC 5 (CANopen)



# TFT Touch Displays



### Standard Elements :

- Programmig with Software "Infotain" horizontal or vertical
- Optimal data base to choice of :
  - background pictures
  - arrows
  - floor stands
  - destination floors
  - special texts
  - piktograms
  - analogous clocks
  - digital voice announcements in different languages
  - gongs
  - push button
  - coding fields
  - name plates

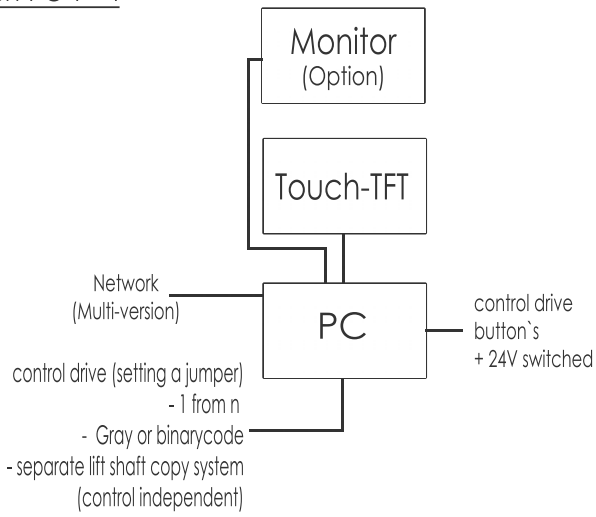
Programmig saved on an interchangeable USB-data stick

Option : key lock box to installation in car fixture

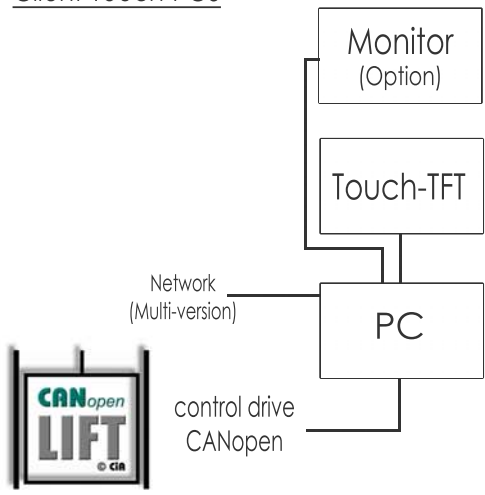
Data sticks can be created as many as possible

## Details

### Client-Touch-PC 1 - 4



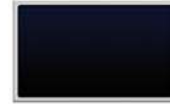
### Client-Touch-PC5



## Touch-Displays-GL Standard Monitors

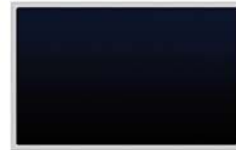
### TFT - 7,0-inch GL 16:9 - 1

resolution : 800 x 480 Pixel  
active area : 151 x 90 mm  
outer dimension : 220 x 117 x 46 mm  
connection : DVI,VGA, voltage 12V/DC/0,3A  
contrast : 800 : 1  
brightness : 450 cd/m<sup>2</sup>  
view angle (r/l/a/d) : 89/89/89/89



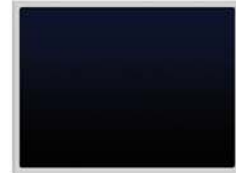
### TFT - 10,1-inch GL 16:9 - 1

resolution : 1280 x 800 Pixel  
active area : 215 x 134 mm  
outer dimension : 265 x 178 x 42 mm  
connection : DVI,VGA, voltage 12V/DC/0,3A  
contrast : 700 : 1  
brightness : 400 cd/m<sup>2</sup>  
view angle (r/l/a/d) : 85/85/85/85



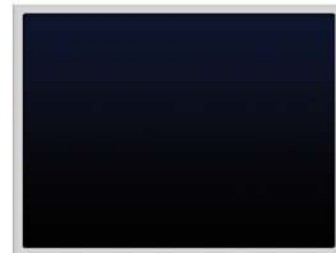
### TFT - 10,4-inch GL 4:3 - 1

resolution : 1024 x 768 Pixel  
active area : 209 x 156 mm  
outer dimension : 250 x 219 x 44 mm  
connection : DVI,VGA, voltage 12V/DC/0,7A  
contrast : 1000 : 1  
brightness : 350 cd/m<sup>2</sup>  
view angle (r/l/a/d) : 88/88/88/88



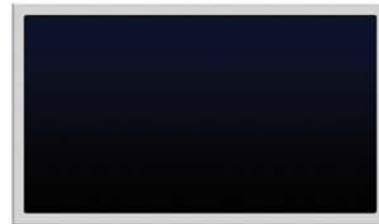
### TFT - 15,0-inch GL 4:3 - 1

resolution : 1024 x 768 Pixel  
active area : 303 x 228 mm  
outer dimension : 372 x 290 x 46 mm  
connection : DVI,VGA, voltage 12V/DC/1,3A  
contrast : 600 : 1  
brightness : 400 cd/m<sup>2</sup>  
view angle (r/l/a/d) : 70/70/55/65



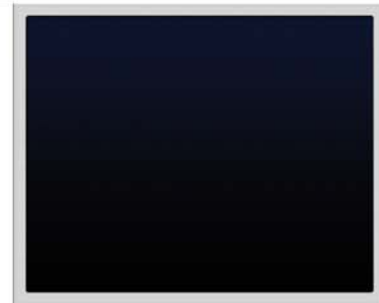
### TFT - 15,6-inch GL 16:9 - 1

resolution : 1366 x 768 Pixel  
active area : 342 x 192 mm  
outer dimension : 429 x 260 x 51 mm  
connection : DVI,VGA, voltage 12V/DC/1,3A  
contrast : 500 : 1  
brightness : 300 cd/m<sup>2</sup>  
view angle (r/l/a/d) : 85/85/85/85



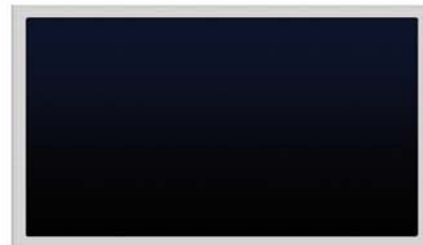
### TFT - 17,0-inch GL 4:3 - 1

resolution : 1280 x 1024 Pixel  
active area : 337 x 269 mm  
outer dimension : 407 x 332 x 51 mm  
connection : DVI,VGA, voltage 12V/DC/1,4A  
contrast : 800 : 1  
brightness : 350 cd/m<sup>2</sup>  
view angle (r/l/a/d) : 80/80/60/80



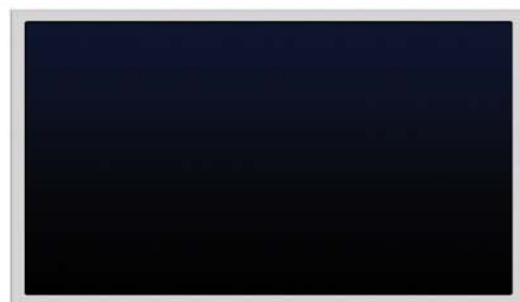
### TFT - 17,3-inch GL 16:9 - 1

resolution : 1920 x 1080 Pixel  
active area : 380 x 213 mm  
outer dimension : 431 x 275 x 48 mm  
connection : DVI,VGA, voltage 12V/DC/1,5A  
contrast : 600 : 1  
brightness : 400 cd/m<sup>2</sup>  
view angle (r/l/a/d) : 80/80/60/80



### TFT - 21,5-inch GL 16:9 - 1

resolution : 1920 x 1080 Pixel  
active area : 473 x 266 mm  
outer dimension : 534 x 330 x 45 mm  
connection : DVI,VGA, voltage 12V/DC/2,4A  
contrast : 1000 : 1  
brightness : 250 cd/m<sup>2</sup>  
view angle (r/l/a/d) : 89/89/89/89





# TFT Touch Displays GL

- Touch-Displays / monitors for installation behind glass (max. 6mm) for example glass-fixture or with glass plate area flush for 2mm stainless-steel fixtures



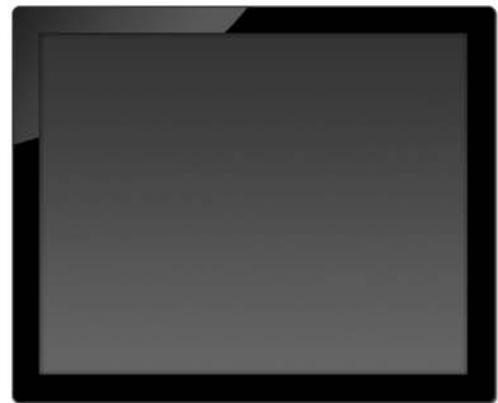
TFT - 15,0-inch FB  
4:3 - 1

resolution :	1024 x 768 Pixel
active area :	304 x 228 mm
outer dimension :	378 x 378 x 50 mm
connection :	DVI,VGA, voltage 12V/DC/1.8A
contrast :	500 : 1
brightness :	212 cd/m <sup>2</sup>
view angle (r/l/a/d) :	70/70/62/62



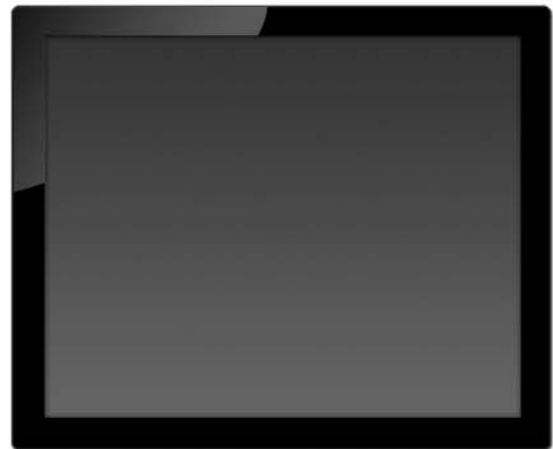
TFT - 17,0-inch FB  
4:3 - 1

resolution :	1280 x 1024 Pixel
active area :	338 x 270 mm
outer dimension :	416 x 352 x 53 mm
connection :	DVI,VGA, voltage 12V/DC/2A
contrast :	1000 : 1
brightness :	225 cd/m <sup>2</sup>
view angle (r/l/a/d) :	80/80/80/80



TFT - 19,0-inch FB  
4:3 - 1

resolution :	1280 x 1024 Pixel
active area :	376 x 301 mm
outer dimension :	454 x 381 x 55 mm
connection :	DVI,VGA, voltage 12V/DC/2.2A
contrast :	800 : 1
brightness :	225 cd/m <sup>2</sup>
view angle (r/l/a/d) :	80/80/80/80



TFT - 21,5-inch FB  
16:9 - 1

resolution :	1920 x 1080 Pixel
active area :	476 x 268 mm
outer dimension :	539 x 335 x 46 mm
connection :	DVI,VGA, voltage 12V/DC/3.8A
contrast :	1000 : 1
brightness :	270 cd/m <sup>2</sup>
view angle (r/l/a/d) :	85/85/80/80



# TFT Touch Displays FB

- Touch-Displays / Monitors with circular black frame for installation on 2mm fixtures

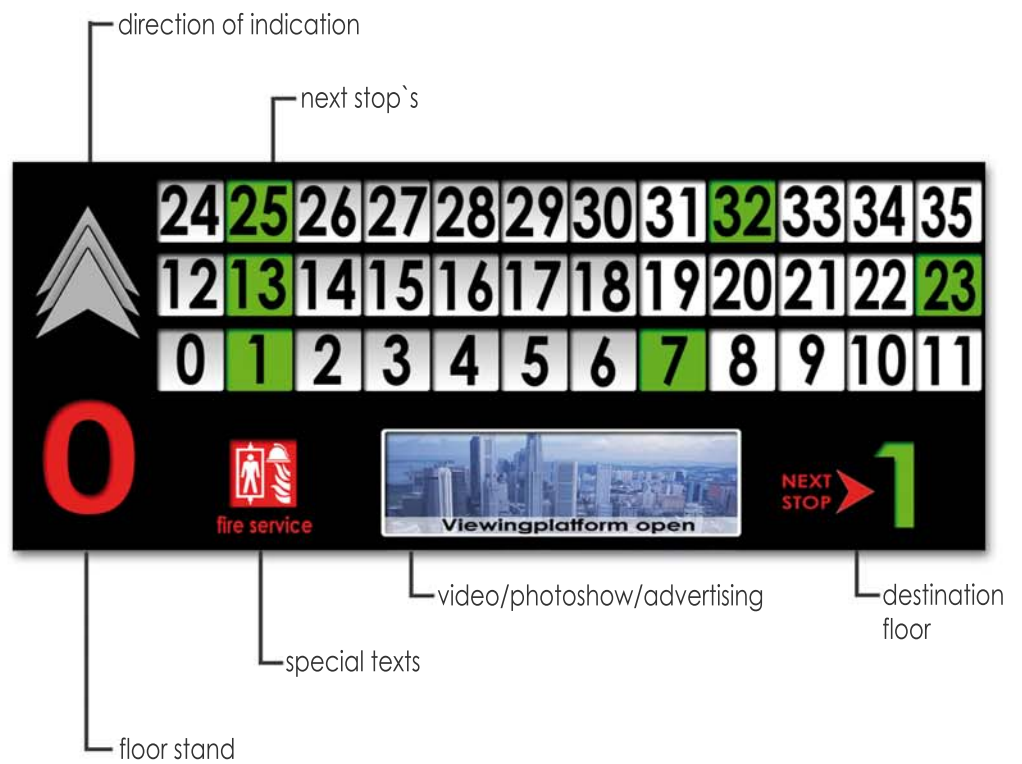


**TFT** 15,0-ST-1  
Stretch-Display 15,9-ST-1

- narrow display to assembly across the elevator door (for group-lifts)
- 16/32/48 or 64 inpputs (1fromN) for the next floor stands



free graphic design  
( no grids / no layout presentation )



▷ Details / Monitors

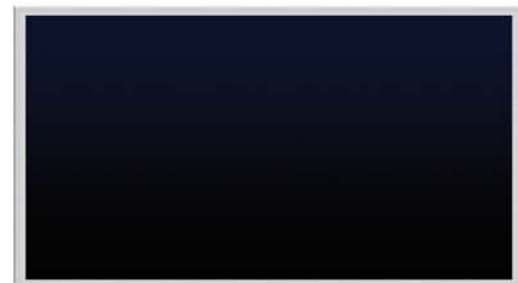
**TFT - 15,0-ST-1**

resolution : 1280 x 242 pixel  
active area : 276 x 71 mm  
outer dimension : 438 x 126 x 48 mm  
connection : VGA, voltage 12V/DC/1.0A  
contrast : 1000 : 1  
brightness : 1000 cd/m<sup>2</sup>  
view angle (r/l/a/d) : 80/80/85/85



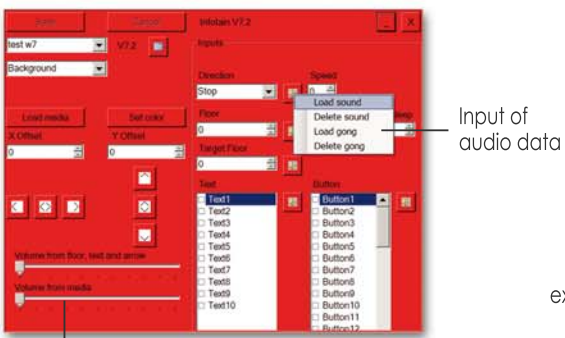
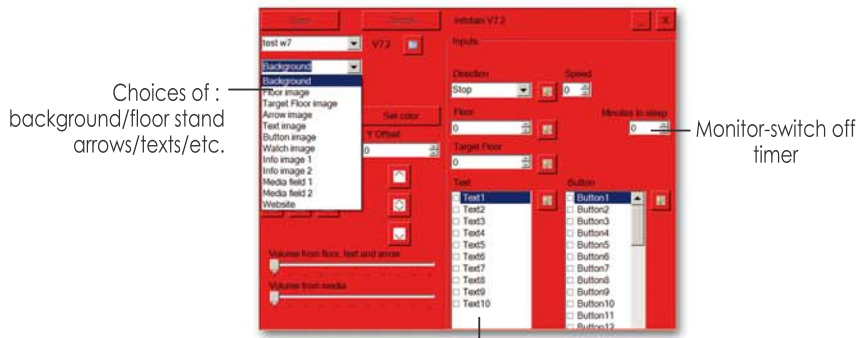
**TFT - 15,9-ST-1**

resolution : 1280 x 512 pixel  
active area : 276 x 150 mm  
outer dimension : 418 x 196 x 48 mm  
connection : DVI,VGA, voltage 12V/DC/1.5A  
contrast : 1000 : 1  
brightness : 1000 cd/m<sup>2</sup>  
view angle (r/l/a/d) : 80/80/85/85



Software "Infotain"

- Only one software for all systems
- Easily import of desired contents
- **Picture data**  
To get optimal results we recommended a photoshop program for example Adobe Photoshop Elements or similar. No reductions for layout/graphics.
- Supported file formats  
picture data : JPG,GIF,BMP,PNG,TIF  
audio data : WMA,WAV,MP3  
video data : WMV
- Using of multimedia contents is dependent on the system
- Some contents are only online possible ( display of web-pages, weather, various clocks and more )  
TV only by using a TV-card and further streamable components



Input of text data

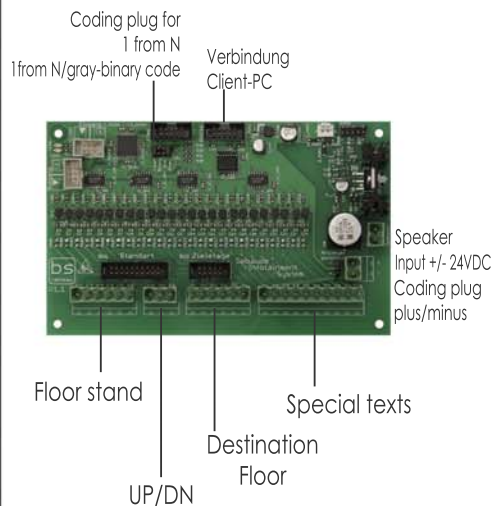
All media contents can be lined up pixel exactly. All listed file formats can be use without any reservation.



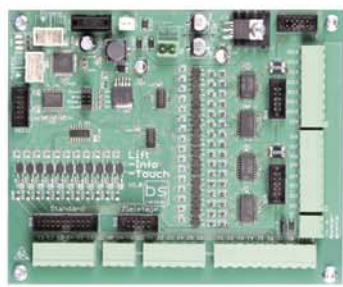
Optimal data base to choices of : background pictures, arrows, floor stands, destination floors, texts, symbols, pictograms

► Connection

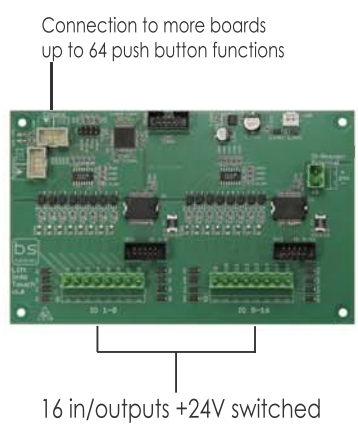
**Interface board**



**Interface multi board Infotain/Touch**



**Expansion board-Touch**



## Building- Infotainment-System

Info-System to display all  
Lift data, floor stand,  
direction of indication,  
special texts,  
emergency notes,  
video clips,  
TV, Internet, presentations,  
photo shows, audio data,  
announcements, music,  
arrival buzzer

Usable to display any  
information in elevators or as  
a normal information system.



### ▷ Details

Programming of Client-PC`s is done by the central computer (processor + monitors).

Client-PC`s are equipment with Intel Atom processors without any mechanical components.

Using the system in elevators the Client-PC is placed on the Cabin roof.

Processing signals gets the Client-PC by an interface board from the control system.

The connecting to the Client-PC from the central computer is done by a Cat7 hanging cable or by a VDSL-router with a two core phone line.

Each Client-PC can receive different information from the central system.

Time control by control system for all PC-Client`s.

# Building-Infotainment-System

Compatible to nearly all elevator branches  
 Gray-binary, 1 from N,  
 CAN-Open-Bus-system,  
 independent shaft copy system

Monitor switching off system  
 (stand-by/energy reduction mode)

### Only one software for:

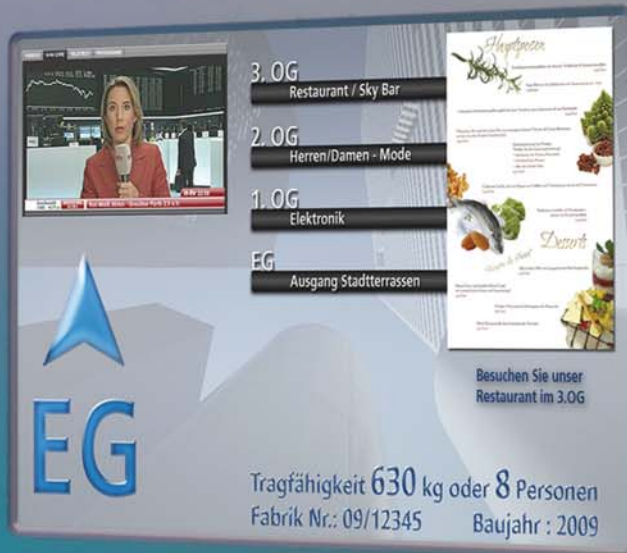
- Single-Version-System
- Multi-Version-System
- Touch screen faceplate

Resolution

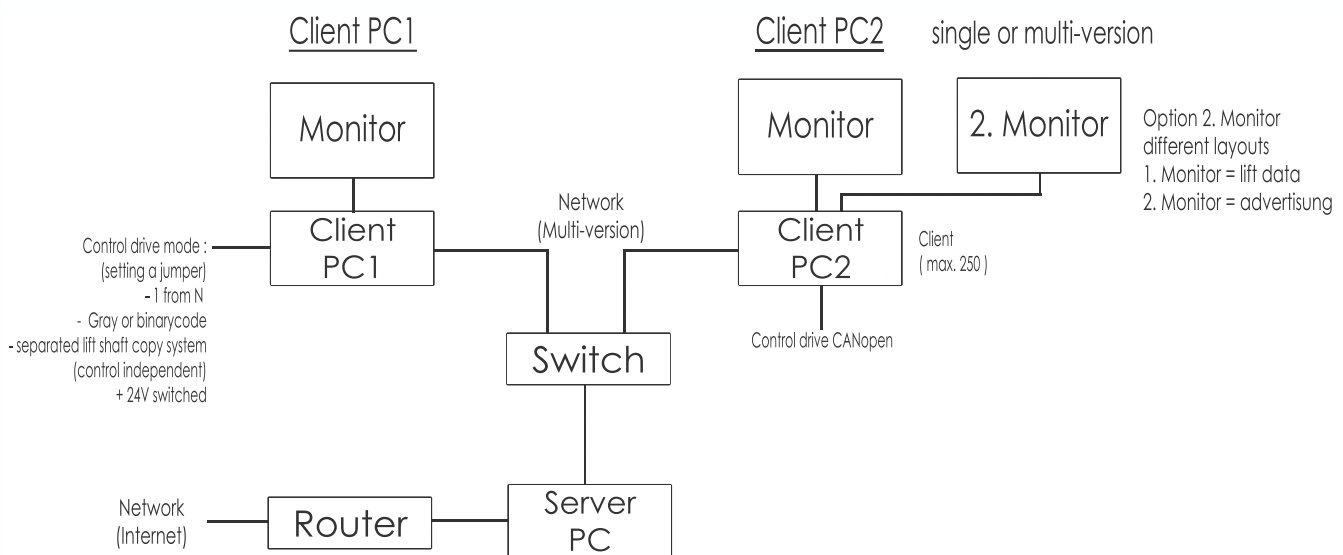
1920x1080 (Full-HD)

monitor sizes as of 7,0 "

- the control system allows to send different information to 250 monitors (Multi-Version-System)



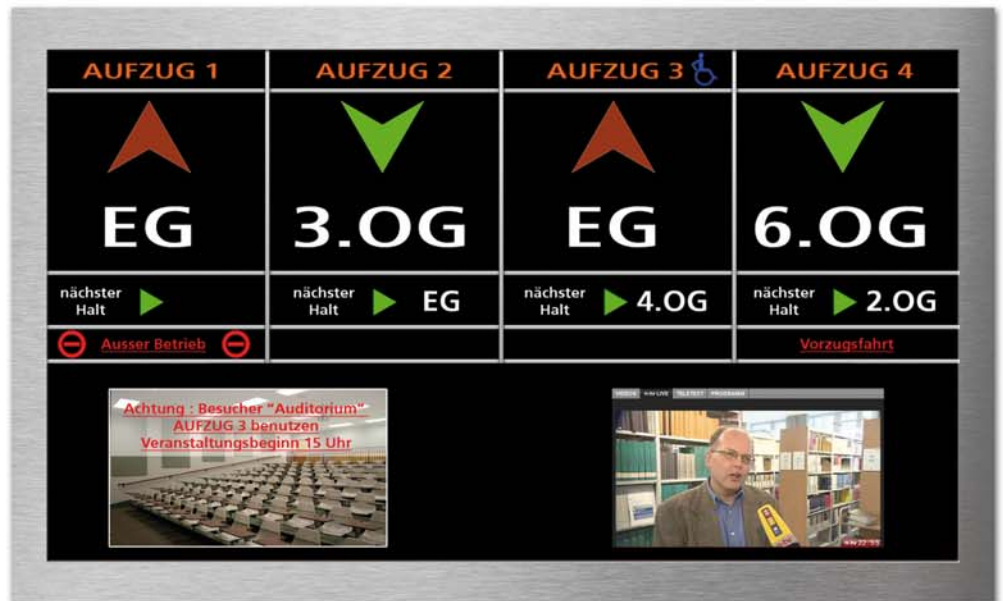
## Details



# TFT-Display / PC

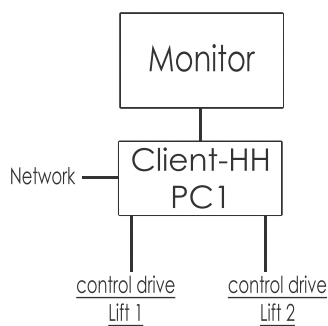
## Elevator-Group-Version

- Client-HH-PC1 / 2 Lifts
- Client-HH-PC2 / 3 Lifts
- Client-HH-PC3 / 4 Lifts
- For elevator group on the floor
- Andication of floor stop`s direction of indication up to 4 elevators simultaneous
- 10 special texts/pictures for all elevators

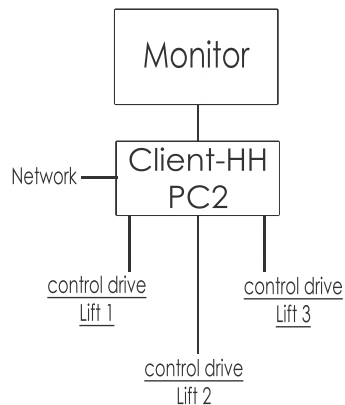


## Details

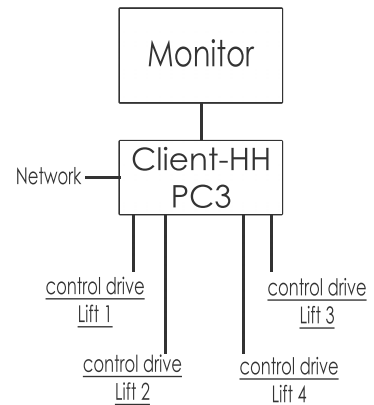
Client HH-PC1 / 2-Lifts



Client HH-PC2 / 3 Lifts



Client HH-PC2 / 4 Lifts



Control drive system : (setting a jumper)  
 - 1 from N  
 - gray or binarycode  
 - mit separater Schachtkopiering  
 (separated lift shaftcopy system/control independent)  
 + 24V switched



**4** Image-Software

**3** Ro\_tech

**2** RA Dr. Schuster

**1** Kanzlei Dr. Ernst

**EG** Foyer

**UG** Tiefgarage

**EG**

630 kg  
8 Personen  
Baujahr 2012  
Hersteller : Lift GmbH

TFT examples

**3. OG** DB - Consult

**2. OG** CDE-Software GmbH

**1. OG** IHK - Verwaltung

**EG** Ausgang/Cafeteria

**UG 1** Parkhaus

**UG 2** Parkhaus

**1.0G**

VORZUG-FAHRT

Tragfähigkeit **630 kg**  
oder **8** Personen  
Fabr.-Nr.: 10-1325  
Baujahr : 2009

**GRAND HOTEL & SPA**  
Herzlich Willkommen

**4. OG** Restaurant

**3. OG** 301 - 379

**2. OG** 201 - 289

**1. OG** 101 - 179

**EG** Reception / Spa

**UG** Tiefgarage

**1.0G**

630 kg 8 Personen  
Fabr.-Nr.: 224 Baujahr : 2009  
Hersteller : Liftfabrik

**Brooktorkai**

**3. OG** Kanzlei Dr. Unrecht & Partner

**2. OG** SP - Webdesign

**1. OG** MPC-Computer

**EG** Marktpassage

**EG**

Apple Store/Marktpassage

Bitte warten  
Sprechverbindung  
wird aufgebaut

Hersteller : LIFT GmbH  
**630 kg 8 Personen**  
Fabrik Nr.: 09/12345  
Baujahr : 2009

**L**  
**LOBBY**

**NEXT 2**  
An Interactive Dining Experience

**Dorint**  
Hotels & Resorts

**Dorint Hotel Hamburg-Eppendorf**

Moin, Moin und herzlich willkommen in Hamburg!

**EG**  
Restaurant

**630 kg 8 Personen**  
Fabr.-Nr.: 64981 Baujahr 2011

**3. OG**

**EG**

**Büro-Haus am Dom**

**4** Kanzlei Recht

**3** WS-Webdesign

**2** CDE-Computer

**1** Com-tech

**EG** Dr. Müller

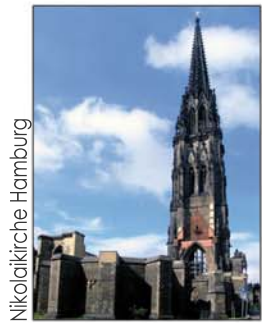
**UG** Tiefgarage

**EG**

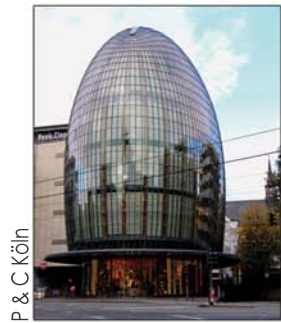
Hersteller : A - B Aufzüge

**630 kg**  
**8 Personen**  
Baujahr 2013  
Fabr. Nr. 1534

# Quality "Made in Germany" .....



Nikolaikirche Hamburg



P & C Köln



Astro Turm Hamburg



Hotel Landmark Bangkok



Hotel Kameha Grand Bonn



Eclipse



Hotel Intercontinental Bangkok



Arlanda Airport Stockholm



Hotel St. Regis Bangkok



Emporio Hamburg



APO Bank Düsseldorf



WTC Rotterdam



Hotel Shangri-La Bangkok

..... world-wide



AIDA Luna/Bella/Divia



Amisgericht Düsseldorf



Kühne & Nagel Hamburg



Alexa shopping center Berlin



Borussia Mönchengladbach



Deutschlandfunk Köln



Rabobank Utrecht



Sign Düsseldorf



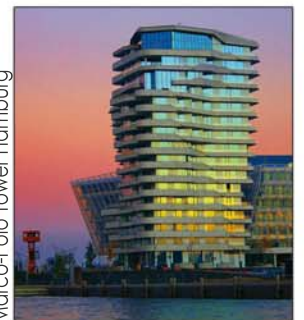
Pyramide of peace Astana



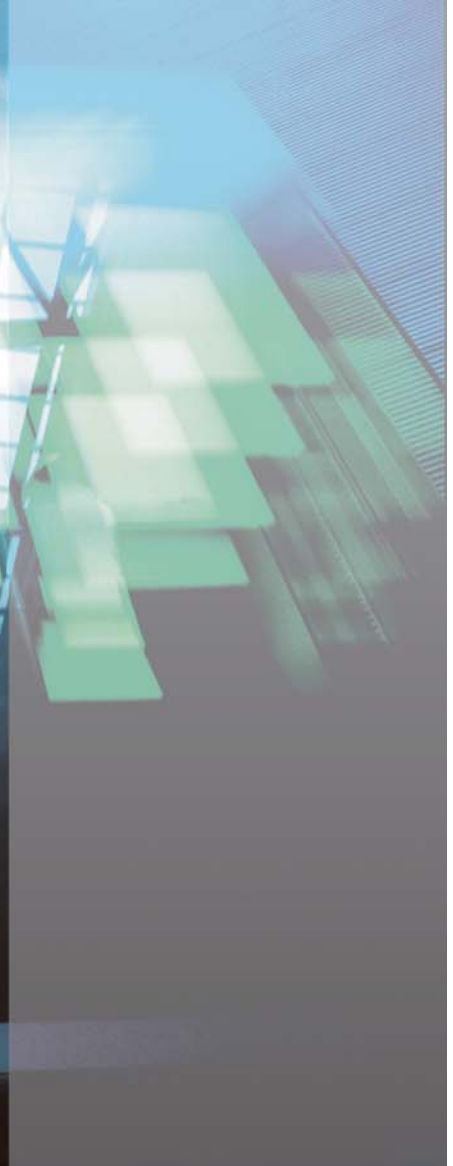
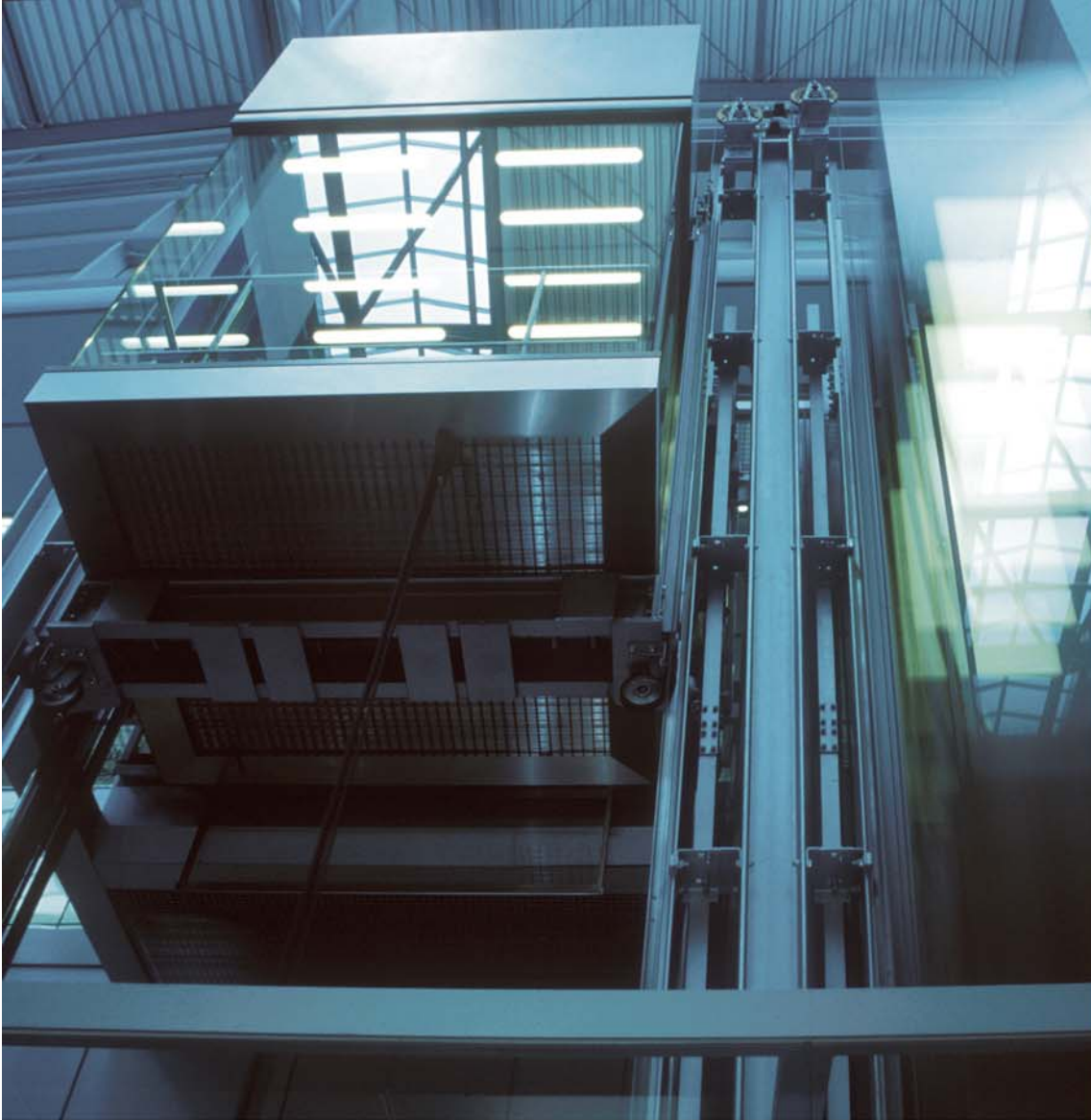
KPMG Berlin



Four Elements Düsseldorf



Marco-Polo Tower Hamburg



bs tableau OHG  
Römerallee 72  
D-53909 Zülpich  
Germany

Tel.: +49 02252 83719-0  
Fax: +49 02252 83719-11  
info@bstableau.de  
www.bstableau.de

Certified Quality-Management-System  
DIN EN ISO 9001:2008



bs tableau